

Yuima Municipal Water District

Pauma Valley, California



Annual Comprehensive Financial Report

for the fiscal year ending June 30, 2023

ANNUAL COMPREHENSIVE FINANCIAL REPORT

Fiscal Year Ended June 30, 2023



Prepared By:

Yuima Municipal Water District's Finance Department
Amy Reeh, General Manager
Lynette Brewer, Finance and Administrative Services Manager

34928 Valley Center Road – PO Box 177 – Pauma Valley, CA 92061
www.yuimamwd.com

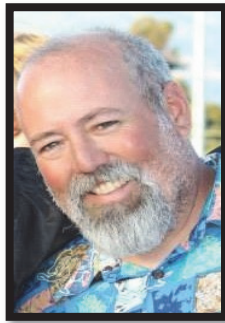
OUR MISSION AND VISION



Roland
Simpson
President



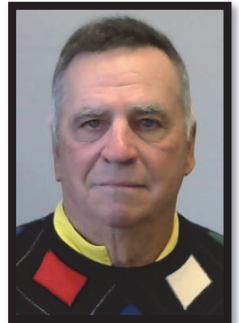
Stephen H.
Wehr
Vice-President



Don
Broomell
Secretary/Treasurer



Laurie
Kariya
Director



Bruce
Knox
Director

Yuima Municipal Water District is committed to providing a diversified, sustainable water supply for water service to our Pauma Valley customers that exceeds all standards of quality and reliability at fair, reasonable, and equitable rates.

We hope to be known and respected in our community as good stewards of the public resources and responsibilities entrusted to us.

The Dedicated Staff of Yuima Municipal Water District

Lynette Brewer
Breona Easley
Matt Munaco
Mark Quinn
Amy Reeh
Noel Ruiz
Allen Simon
Rosbelth Valenzuela

Yuima Municipal Water District
Annual Comprehensive Financial Report
Year Ended June 30, 2023

TABLE OF CONTENTS

	PAGE
I. INTRODUCTORY SECTION	
Letter of Transmittal	i - viii
Organizational Chart	ix
Principal Officials	x
Government Finance Officers Association Certificate of Achievement	xi
II. FINANCIAL SECTION	
Independent Auditors' Report	1 - 3
Management's Discussion and Analysis	4 - 12
Basic Financial Statements:	
Statement of Net Position - Proprietary Fund	13
Statement of Revenues, Expenses and Changes in Net Position - Proprietary Fund	14
Statement of Cash Flows - Proprietary Fund	15
Notes to Financial Statements	16 - 44
Required Supplementary Information:	
Schedule of the District's Proportionate Share of the Net Pension Liability	
CalPERS Pension Plan	45
Schedule of Contributions - CalPERS Pension Plan	46
Schedule of Changes in Net OPEB Liability (Asset) and Related Ratios	47 - 48
Schedule of Contributions - Retiree Health Benefit Plan	49
III. STATISTICAL SECTION	
Net Position by Component	50 - 52
Changes in Net Position	53 - 55
Fund Balances of Governmental Funds	56
Changes in Fund Balances of Governmental Funds	57 - 58
Operating Revenues by Source	59
Commodity Charges and Base Charges	60
Water Sold by Type of Customer	61
Water Purchased and Produced	62
Principal Water Consumers	63
Property Tax and Assessment Levies	64
Assessed Value of Taxable Property	65
Ratios of Outstanding Debt by Type	66
Revenue Debt Coverage	67 - 68
Computation of Direct and Overlapping Debt	69
San Diego County Demographic and Economic Statistics	70
San Diego County Employment by Industry	71
San Diego County Principal Employers	72
District Employees and Operational Information	73
Capital Assets	74 - 75
Operating and Capital Indicators	76 - 77

Introductory Section



Annual Comprehensive Financial Report



Board of Directors
Roland Simpson - President
Steve Wehr - Vice-President
Don Broomell - Secretary/ Treasurer
Laurie Kariya - Director
Bruce Knox - Director

January 4, 2024

Roland Simpson, President
Members of the Board of Directors
Yuima Municipal Water District
34928 Valley Center Road
Pauma Valley, CA 92061-0177

We are pleased to present the Annual Comprehensive Financial Report (ACFR) for the Yuima Municipal Water District (hereinafter referred to as “the District”) for the fiscal year ended June 30, 2023. The purpose of the report is to provide the Board of Directors, our customers, creditors, investors, and other interested parties with transparent financial information about the District.

The ACFR was prepared by the District’s Finance Department following the guidelines set forth by the Government Accounting Standards Board (GASB) and in accordance with Generally Accepted Accounting Principles (GAAP). Responsibility for both the accuracy of the data presented, and the completeness and fairness of the presentation, including all disclosures, rests with District management. We believe the data, as presented, is accurate in all material respects and that it is presented in a manner that provides a fair representation of the financial position and results of operation of the District and includes all disclosures necessary to enable readers to gain the maximum understanding of the District’s financial activity.

The District’s policy requires that an independent certified public accounting firm, selected by the Board, audit the basic financial statements on an annual basis. The goal of the independent audit was to provide reasonable assurance that the financial statements of the District for the fiscal year ended June 30, 2023, are free of material misstatements. The independent audit involved examining, on a test basis, evidence supporting the amounts and disclosures in the financial statement, assessing the accounting principles used and significant estimates made by management, as well as evaluating overall financial statements presentation. The independent auditor, Teaman, Ramirez, and Smith Inc. have issued an unmodified (“clean”) opinion on the District’s financial statements for the fiscal year ended June 30, 2023. The independent auditor’s report is presented as the first component of the financial section of this report.

Management’s Discussion & Analysis (MD&A) immediately follows the independent auditor’s report in the Financial Section and provides an overview, summary, and analysis of the basic financial statements.

YUIMA MUNICIPAL WATER DISTRICT
P.O. Box 177 • 34928 Valley Center Road • Pauma Valley, CA 92061
(760) 742-3704 • (760) 742-2069 • www.yuimamwd.com • e-mail: yuima@yuimamwd.com

WATER DISTRICT PROFILE

The District was incorporated on January 19, 1963, as a California special district by the State Legislature, with an entitlement to import water under the provisions of the *California Municipal Water District Act of 1911, section 71000 et.seq.* of the *California Water Code* as amended. The District was formed to import Colorado River water to augment local water supplies.

The District is governed by a five-member Board of Directors, elected by geographical location. Prior to the District's formation, the sole source of water was local ground water on the alluvial fan and the San Luis Rey River basin. Following a period of drought extending back to 1949, coupled with increased agricultural water demands, the water table fell drastically, and overdrafts of the underlying water basin lowered the basin's level as much as 85 feet, forcing the abandonment of some wells and giving rise to increased pumping costs. This condition also prompted the filing of the *Strub vs. Palomar Mutual Water Company* suit to which the District is successor in interest, and which limits the withdrawal of water for use within the boundaries of Improvement District "A" (IDA) from the San Luis Rey River upstream of Cole Grade Road to no more than 1,350-acre feet annually. Yuima, as successor in interest to Palomar Mutual, continues to operate the former Palomar Mutual system and properties (now known as Improvement District A) as an independent water system. Yuima is responsible for administering IDA's compliance with *Strub et al.*



The District's ordinances, policies, taxes, and rates for service are set by the five-member Board of Directors, who are elected by voters in their respective geographic divisions, to serve staggered four-year terms on its Governing Board. The Board of Directors (Board) governs the District. The Board manages the District through an appointed General Manager. The District's management team also includes the Finance & Administrative Services Manager and the Operations Manager. The District currently employs eight (8) full-time employees.

The financial data presented herein includes information for activities and entities that are significantly controlled by the District and for which the Board is primarily financially accountable.

THE REPORTING ENTITY AND ITS SERVICES

The District is a "revenue neutral" public agency, meaning that rates are set based on projections so that each end-user pays his or her fair share of the District's costs of water acquisition, operation and maintenance, betterment, renewal, and replacement of the public water facilities. The District is an "Enterprise" district, in that operations are financed and operated in a manner similar to private business enterprises – where the intent is that the costs (expenses, including depreciation) of providing goods or services to the general public on a continuing basis is to be financed or recovered primarily through user charges; or where periodic determination of revenues earned, expenses incurred, and/or net income is deemed appropriate for capital maintenance, public policy, management control, accountability, or other purposes. Since the District is in the business of selling water and rendering services to an end user, it is

required by the State of California to follow the enterprise type of fund accounting. All proprietary funds are accounted for on a cost of services or “capital maintenance” measurement focus. This means that all assets and all liabilities (whether current, non-current, or restricted) associated with the activity are included in the balance sheet.

The District has established and maintains various self-balancing groups of accounts to enhance internal control and to further the attainment of other management objectives. These groups of accounts, which are funds and sub-funds of the reporting entity, are identified in the District’s books and records as:

- ✓ General Fund
- ✓ Improvement District A Fund

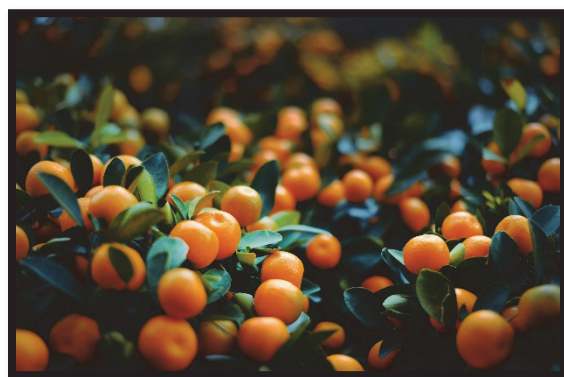
The General Fund accounts for all activity related to water operations as well as the general operations of the District’s water operations. Improvement District A Fund accounts for water operations, capital assets, and construction-in-progress transactions related exclusively to that geographically defined area.

CURRENT ECONOMIC CONDITIONS AND OUTLOOK

San Diego County had a 3.9% unemployment rate in June 2023 reflecting a slight increase from 3.2% in June of 2022. Although it is an increase, it is below the long-term average of 5.7%. San Diego County’s median home prices increased by 3.1% in June 2023 to \$903,000 from June of 2022. Those purchasing homes today can expect to pay on average an interest rate on a 30-year Fixed Rate Mortgage of 6.71% up from 5.88% last year.



Ten of the state’s industry sectors gained jobs in June 2023. The hospitality sector continues to do well with growth in new jobs and people reentering the job market as wages increase and childcare normalizes. Education, health services, and leisure and hospitality sectors saw the largest employment increases.



Over the last 59 years, the District has grown to be a strong agricultural community. Today the District serves a population of 2660 through 347 service connections provided within approximately 21 square miles of northern San Diego County. The District operates 44.1 miles of water main, 23 productive wells, 10 potable water tanks, and 2 Ag only reservoirs. It appears unlikely that population growth will be a significant factor within the next five years. No major housing developments are planned, and even if a project were initiated today, it would take at least five years to obtain the appropriate zoning changes and complete construction.

There continues to be one active annexation project in progress at the District, but this annexation is not expected to be completed within the next year. This annexation is comprised of the existing population needing a more dependable source of water. It is estimated that these projects will bring an additional sixty domestic meters. However, because these are domestic meters the District estimates only a 16- acre foot per year increase in water sales. It is estimated that population growth will not exceed 0.5% per year over the next five years. Considering that only about 2% of total District demand is residential, the increase in population growth is expected to be negligible with respect to overall water demand during the next few years.

In fiscal year 2022-23 the District purchased approximately 63% of its water from the San Diego County Water Authority (SDCWA or the “Authority”), at a cost of \$5.8 million. The Authority imports most of its water from the Metropolitan Water District of Southern California (MET). For the fiscal year ended June 30, 2023, the District billed 347 customers for 5,212-acre feet of water, representing a large decrease in sales from the prior year of 1,949-acre feet.

Water sales for the past ten years have ranged from 5,212 to 8,819-acre feet. Because a large portion of our sales are due to agriculture, sales are greatly affected by weather conditions, making sales projections difficult. The Pauma Valley area received 21.24 inches of rainfall in fiscal year 2022-23, which was a 104.62% increase from the previous year. Yuima realized a 27.22% decrease in the amount of water sold from the prior fiscal year due to the large amount of rain.

As the chart to the right depicts, our agricultural customers purchased 94% of the District's total water sales in fiscal year 2022-23, while wholesale and domestic sales make up the remaining 6%. As water is one of the largest production costs for farmers in San Diego County, rapidly increasing wholesale water rates have the potential to severely affect the profitability of agriculture and the viability of our customers’ agricultural businesses. The significant price increases for imported water along with fluctuating water sales have made it difficult to project long-term sales demand forecasts.



LONG-TERM FINANCIAL PLANNING

Fiscal Year 2022-23 continued with the focus mainly on the development and submission of a Groundwater Sustainability Plan. This project is a joint effort with other local agencies within the Pauma Valley area to comply with the State of California’s Sustainable Groundwater Management Act (SGMA). SGMA requires that all groundwater basins must submit a Groundwater Sustainability Plan and that all basins must be in balance by 2040.

Dependence on imported water supplies decreased greatly due to a decrease in demands during the fiscal year. Water sales for Fiscal Year 2022-23 decreased 27.22%. This decrease was most likely due to a large increase in rainfall during the fiscal year. The District still strives to find ways to increase their local supply but must remain cognizant of weather conditions (reduced rainfall) and the future implications of the Sustainable Ground Water Management Act. While any restrictions imposed from this act are in the distant future, the District must begin addressing the reduction of local supply when planning facility improvements now. The District is currently finalizing a well lease agreement with a customer enabling the District to be able to purchase ground water at a significant amount less than purchasing from the SDCWA. This will help the District to keep rates stabilized in the event of another extremely wet year. The San Diego County Water Authority has begun the design and construction of an emergency flow control facility to provide an alternative source of water for Yuima for use during a North County emergency storage event.

FINANCIAL INFORMATION AND INTERNAL CONTROLS

District management is responsible for establishing and maintaining a system of internal controls designed to ensure that the District's assets are protected from loss, theft, or misuse, and to ensure that adequate accounting data is compiled to allow for the presentation of its Financial Statements in conformity with generally accepted accounting principles. Internal controls are designed to provide reasonable assurance that these objectives are met as effectively as possible. The concept of reasonable assurance recognizes that the cost of maintaining the system of internal controls should not exceed benefits likely to be derived, and that the evaluation of costs and benefits requires estimates and judgments by management. All internal control evaluations occur within the above framework.

Management believes that activities presented within this report comply with financial, legal, and contractual obligations, as prudent fiduciary responsibility requires. In addition, we believe that the District's internal accounting controls adequately safeguard assets and provide reasonable assurance of proper recording of financial transactions. During the year, additional internal control improvements to the accounting software have been made, and we continue to identify ways in which we can strengthen our procedures.

ACCOUNTING SYSTEM

The Finance department is responsible for providing financial and administrative services for the District, including financial accounting and reporting, payroll and accounts payable disbursement functions, cash, investments and debt management, budgeting, grant administration, purchasing, data processing, customer billing, processing of customer payment, customer service, internal auditing, administrative services, human resources, and special financial analyses. The District reports its activities as an enterprise fund, which is used to account for operations like business enterprises, where the provision of services is financed or recovered primarily through user charges.

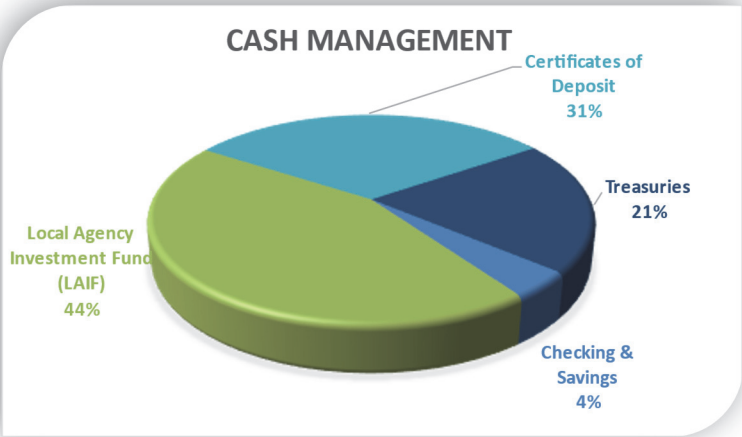
BUDGETING CONTROLS

The District views the budget as an essential tool for proper financial management. The District adopts a budget annually to outline major elements of the forthcoming year's operating and capital plans and to allocate funding required for those purposes. It is designed and presented for the general needs of the

District, its staff, and its customers. It is a comprehensive and, for the most part, a balanced financial plan that features District services, resources and their allocation, financial policies, and other useful information to allow users to gain a general understanding of the District’s financial status and future. The District’s operating and capital budgets are approved by the Board of Directors. Board approval is required for any increase in appropriations. Actual expenditures are then compared to these appropriations each month and are distributed to all department heads monthly and to the Board quarterly. Annual operating water user rates and charges are derived from the annual operating budget and are based on historical seasonal demand, and other internal and external factors impacting the budget. The District maintains two sets of user rates and charges to account for the differing entitlement of the respective geographic areas to local water. One set is for the General District and the other for Improvement District A. Higher pumping charges apply in higher elevations throughout the District.

CASH MANAGEMENT

The District is regulated by State law (primarily California Government Code Section 53600 et seq.) as to the types of securities in which it can invest its cash assets. In addition, the Board of Directors annually adopts an investment policy that is generally more restrictive than the State codes. The District’s investment policy governs the cash management and investment of all District funds. The standard practice of the District is to maintain an appropriate balance between safety, liquidity, and yield of its investments while meeting required expenditures, and conforming to all applicable State laws, the District’s investment policy, and prudent cash management principles.



For the fiscal year 2022-23, the District’s fixed income investment portfolio consisted primarily of short-term securities with an average maturity of 365 days or 12 months. These securities included the State-managed Local Agency Investment Fund (LAIF) and various Certificates of Deposit (CD’s).

On June 30, 2023, the District’s cash assets totaled \$4.9 million dollars. The diversification of the portfolio is shown in the chart to the above. These cash balances are allocated to various restricted funds.

RISK MANAGEMENT

In 1996, the District became a member of the Joint Powers Insurance Authority (JPIA), a pooled insurance program developed by the Association of California Water Agencies that provides the District's coverage for general liability insurance, property insurance, employee bonds, and other blanket coverage. In 2003 the District added the worker's compensation coverage under JPIA. During fiscal year 2022-23, the District continued its proactive liability risk management role through careful monitoring of losses and designing and implementing programs to minimize risks. In addition, management analyzes workers' compensation issues by monitoring work conditions, and organizing and implementing safety training programs to reduce employee exposure to hazards. The District proudly maintains an excellent low loss history in all JPIA programs.

PENSION AND DEFERRED COMPENSATION PLANS

The District provides two complementary retirement plan programs for employees. The first is a defined benefit pension plan through the California Public Employees' Retirement System (CalPERS). Upon retirement, District employees are entitled to a specified retirement benefit. The plan is more fully described in Note 6 of the Financial Statements.

In addition, the District has adopted a Deferred Compensation Plan in accordance with Section 457(b) of the Internal Revenue Code. All contributions to the Deferred Compensation Plan are employee contributions. The employees are not liable for income taxes on amounts deferred until the funds are withdrawn. The deferred compensation plan was amended May 26, 2009, in accordance with changes in the Internal Revenue code. In accordance with these and previous Internal Revenue code revisions, all assets in the Plans are held in trust for the exclusive benefit of the participants and their beneficiaries and therefore are not recognized in the accompanying financial statements. As of June 30, 2023, two current employees were participating in the 457(b) Plan.

AWARDS

The Government Finance Officers Association (GFOA) of the United States and Canada awarded a Certificate of Achievement for Excellence in Financial Reporting to Yuima Municipal Water District for its Annual Comprehensive Financial Report (ACFR) for the fiscal year ended June 30, 2022. This is the fourteenth year that the District has achieved this prestigious award. In order to be awarded a Certificate of Achievement, a District must publish an easy to read and efficiently organized annual comprehensive financial report. This report must satisfy both generally accepted accounting principles and applicable legal requirements. A Certificate of Achievement is valid for a period of one year only. We believe that our current annual comprehensive financial report continues to meet the Certificate of Achievement Program's requirements and we are respectfully submitting it to the GFOA to determine its eligibility for another certificate.

CONTACTING THE DISTRICT'S FINANCE DEPARTMENT

This financial report is designed to provide the Board, customers, creditors, and investors with a general overview of the District's financial condition. Should you have any questions regarding the content of this report, please contact Amy Reeh, General Manager, at (760) 742-3704 or amy@yuimamwd.com.

ACKNOWLEDGMENTS

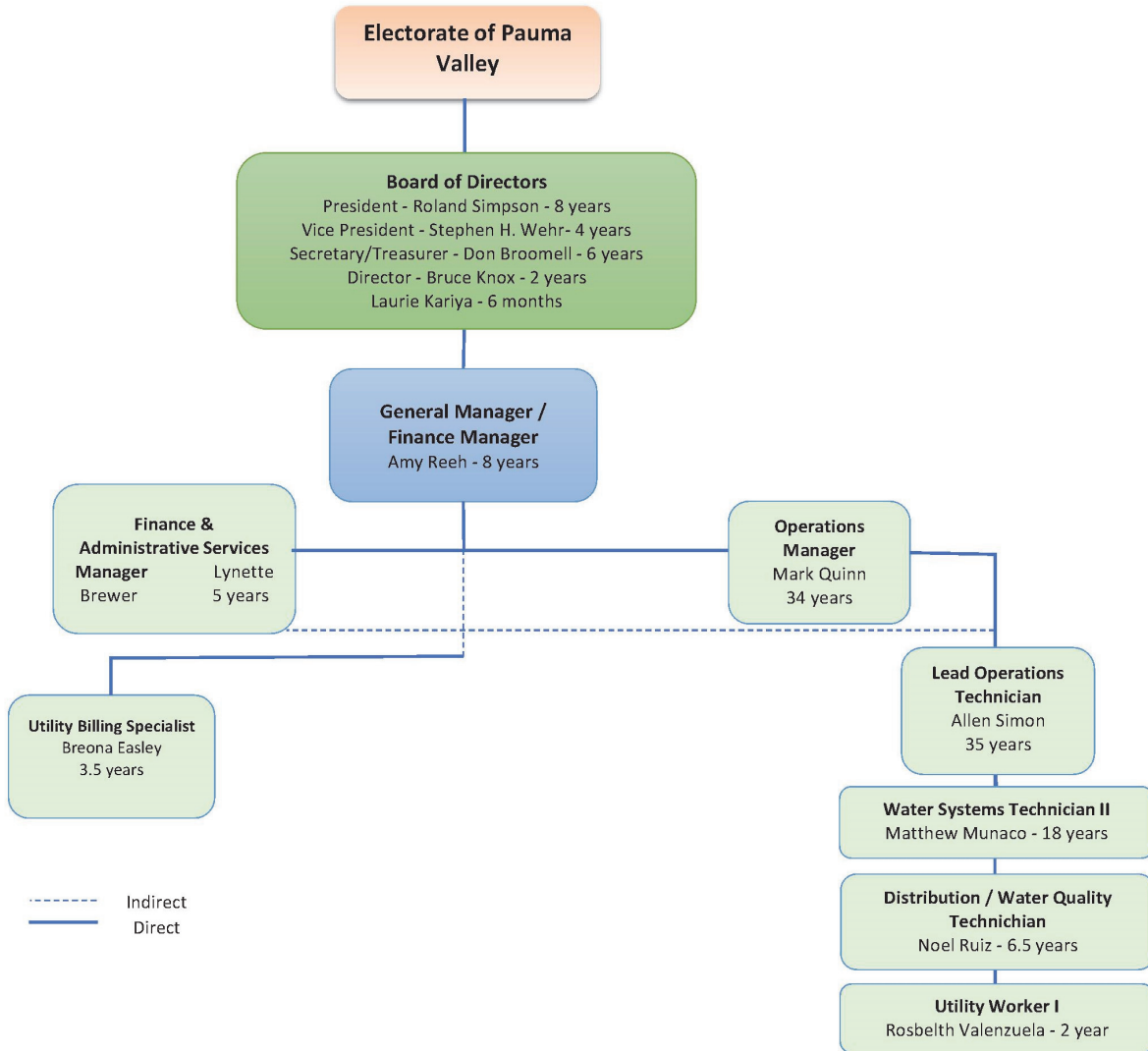
The preparation of this report could not have been accomplished without the contribution of the Finance Department and our independent auditor, Teaman, Ramirez and Smith, Inc. We would also like to particularly thank the Board of Directors for their continued dedication to supporting the highest level of prudent fiscal management.

Respectfully Submitted:

A handwritten signature in blue ink that reads "Amy Reeh". The signature is written in a cursive, flowing style.

Amy Reeh
General Manager

**Yuima Municipal Water District
Organizational Chart**



PRINCIPAL OFFICIALS

Fiscal Year Ended June 30, 2023

BOARD OF DIRECTORS

Roland Simpson, President
Stephen H. Wehr, Vice President
Don Broomell, Director
Laurie Kariya, Director
Bruce Knox, Director

GENERAL MANAGER

Amy Reeh

GENERAL COUNSEL

Rutan & Tucker, LLP

INDEPENDENT AUDITOR

TEAMAN, RAMIREZ & SMITH, INC.



Yuima Municipal Water District

34928 Valley Center Road
Pauma Valley, CA 92061

760.742.3704 ph
760.742.2069 fax

www.yuimamwd.com



Government Finance Officers Association

Certificate of
Achievement
for Excellence
in Financial
Reporting

Presented to

**Yuima Municipal Water District
California**

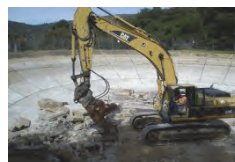
For its Annual Comprehensive
Financial Report
For the Fiscal Year Ended

June 30, 2022

Christopher P. Morrill

Executive Director/CEO

This page was intentionally left blank



Financial Section



Annual Comprehensive Financial Report

INDEPENDENT AUDITORS' REPORT

To the Board of Directors
Yuima Municipal Water District
Yuima, California

Report on the Audit of the Financial Statements

Opinion

We have audited the accompanying financial statements of the Yuima Municipal Water District (the "District"), as of and for the year ended June 30, 2023, and the related notes to the financial statements, which collectively comprise the District's basic financial statements as listed in the table of contents.

In our opinion, the financial statements referred to above present fairly, in all material respects, the respective financial position of the District, as of June 30, 2023, and the changes in financial position, and its cash flows for the year then ended in accordance with accounting principles generally accepted in the United States of America.

Basis for Opinion

We conducted our audit in accordance with auditing standards generally accepted in the United States of America and the standards applicable to financial audits contained in *Government Auditing Standards*, issued by the Comptroller General of the United States. Our responsibilities under those standards are further described in the Auditor's Responsibilities for the Audit of the Financial Statements section of our report. We are required to be independent of the District and to meet our other ethical responsibilities, in accordance with the relevant ethical requirements relating to our audit. We believe that the audit evidence we have obtained is sufficient and appropriate to provide a basis for our audit opinion.

Responsibilities of Management for the Financial Statements

Management is responsible for the preparation and fair presentation of the financial statements in accordance with accounting principles generally accepted in the United States of America; and for the design, implementation, and maintenance of internal control relevant to the preparation and fair presentation of financial statements that are free from material misstatement, whether due to fraud or error.

In preparing the financial statements, management is required to evaluate whether there are conditions or events, considered in the aggregate, that raise substantial doubt about the District's ability to continue as a going concern for twelve months beyond the financial statement date, including any currently known information that may raise substantial doubt shortly thereafter.

Auditor's Responsibilities for the Audit of Financial statements

Our objectives are to obtain reasonable assurance about whether the financial statements as a whole are free from material misstatement, whether due to fraud or error, and to issue an auditor's report that includes our opinion. Reasonable assurance is a high level of assurance but is not absolute assurance and therefore is not a guarantee that an audit conducted in accordance with generally accepted auditing standards and *Government Auditing Standards* will always detect a material misstatement when it exists. The risk of not detecting a material misstatement resulting from fraud is higher than for one resulting from error, as fraud may involve collusion, forgery, intentional omissions, misrepresentations, or the override of internal control. Misstatements are considered material if there is a substantial likelihood that, individually or in the aggregate, they would influence the judgment made by a reasonable user based on the financial statements.

In performing an audit in accordance with generally accepted auditing standards and *Government Auditing Standards*, we:

- Exercise professional judgment and maintain professional skepticism throughout the audit.
- Identify and assess the risks of material misstatement of the financial statements, whether due to fraud or error, and design and perform audit procedures responsive to those risks. Such procedures include examining, on a test basis, evidence regarding the amounts and disclosures in the financial statements.
- Obtain an understanding of internal control relevant to the audit in order to design audit procedures that are appropriate in the circumstances, but not for the purpose of expressing an opinion on the effectiveness of the District's internal control. Accordingly, no such opinion is expressed.
- Evaluate the appropriateness of accounting policies used and the reasonableness of significant accounting estimates made by management, as well as evaluate the overall presentation of the financial statements.
- Conclude whether, in our judgment, there are conditions or events, considered in the aggregate, that raise substantial doubt about the District's ability to continue as a going concern for a reasonable period of time.

We are required to communicate with those charged with governance regarding, among other matters, the planned scope and timing of the audit, significant audit findings, and certain internal control-related matters that we identified during the audit.

Required Supplementary Information

Accounting principles generally accepted in the United States of America require that the management's discussion and analysis and the required supplementary information on pages 4-12 and 45-49 be presented to supplement the basic financial statements. Such information is the responsibility of management and, although not a part of the basic financial statements, is required by the Governmental Accounting Standards Board, who considers it to be an essential part of financial reporting for placing the basic financial statements in an appropriate operational, economic, or historical context. We have applied certain limited procedures to the required supplementary information in accordance with auditing standards generally accepted in the United States of America, which consisted of inquiries of management about the methods of preparing the information and comparing the information for consistency with management's responses to our inquiries, the basic financial statements, and other knowledge we obtained during our audit of the basic financial statements. We do not express an opinion or provide any assurance on the information because the limited procedures do not provide us with sufficient evidence to express an opinion or provide any assurance.

Other Information

Management is responsible for the other information included in the annual report. The other information comprises the introductory and statistical sections but does not include the basic financial statements and our auditor's report thereon. Our opinion on the basic financial statements do not cover the other information, and we do not express an opinion or any form of assurance thereon.

In connection with our audit of the basic financial statements, our responsibility is to read the other information and consider whether a material inconsistency exists between the other information and the basic financial statements, or the other information otherwise appears to be materially misstated. If, based on the work performed, we conclude that an uncorrected material misstatement of the other information exists, we are required to describe it in our report.

Other Reporting Required by *Government Auditing Standards*

In accordance with *Government Auditing Standards*, we have also issued our report dated January 4, 2024, on our consideration of the District's internal control over financial reporting and on our tests of its compliance with certain provisions of laws, regulations, contracts, and grant agreements and other matters. The purpose of that report is solely to describe the scope of our testing of internal control over financial reporting and compliance and the results of that testing, and not to provide an opinion on the effectiveness of the District's internal control over financial reporting or on compliance. That report is an integral part of an audit performed in accordance with *Government Auditing Standards* in considering District's internal control over financial reporting and compliance.

Teaman Ramirez & Smith, Llc.

Riverside, California

January 4, 2024

MANAGEMENT'S DISCUSSION AND ANALYSIS

Fiscal Year Ended June 30, 2023

This section of the Yuima Municipal Water District's Annual Comprehensive Financial Report (ACFR) presents Management's Discussion and Analysis of the District's financial performance for fiscal year ended June 30, 2023, and includes the Governmental Accounting Standard Board's (GASB) enhanced financial reporting requirements. We offer readers of the Yuima Municipal Water District's financial statements this narrative overview and analysis of the financial position and results of operations for the fiscal year ended June 30, 2023.

Included in this section are:

- Financial Highlights
- Financial Statement Overview;
- Analysis of Financial Position and Results of Operations;
- Overview of the Accompanying Basic Financial Statements;

The Letter of Transmittal can be found on pages i-viii and should be read in conjunction with the audited financial statements. The audited financial statements are in the section following the MD&A. All amounts, unless otherwise indicated, are expressed in dollars.

FINANCIAL HIGHLIGHTS

- The assets and deferred out flows of resources of the Yuima Municipal Water District exceeded its liabilities and deferred inflows of resources to arrive at a total Net Position of \$16,782,058. The unrestricted net position, which represents the amounts available to meet the Yuima Municipal Water District's ongoing obligations to customers and creditors, is a surplus of \$3,494,346.
- The Yuima Municipal Water District's total net position decreased \$1,404,629. This reduction is primarily due to a reduction in water sales which is the result of a significantly above average rainfall.

FINANCIAL STATEMENTS OVERVIEW

The discussion and analysis provided here is intended to serve as an introduction to the District's basic financial statements. The District's basic financial statements are comprised of the following: 1) Statement of Net Position, 2) Statement of Revenues, Expenses, and Changes in Net Position, 3) Statement of Cash Flows and 4) the notes to the financial statements. This report also includes supplementary information intended to furnish additional detail to support the basic financial statements themselves.

Statement of Net Position - The Statement of Net Position presents the District's financial position relating to assets, liabilities, and deferred outflows/inflows of resources. Over time, increases or decreases in net positions may serve as a valuable indicator of whether the District's financial position is improving or deteriorating.

Statement of Revenues, Expenses, and Changes in Net Position - The Statement of Revenues, Expenses, and Changes in Net Position summarizes the District's operations during the year. In accordance with Generally Accepted Accounting Principles (GAAP), revenues are recognized (recorded) when services are provided, and expenses are recognized when incurred. Operating revenues and expenses are related to the District's core activities. Non-operating revenues and expenses are not directly related to the core activities of the District (e.g. interest income, property taxes, and interest expenses).

Statement of Cash Flows - The Statements of Cash Flows present the amounts of cash provided or used by the District's operating, financing, and investment activities during the reporting period. Every cash flow has been categorized as one of the following activities: operating, noncapital financing, capital and related financing, or investing. The primary purpose of this report is to provide information to the general readers about cash inflows and outflows which occurred during the reporting fiscal year. The Cash Flow statement helps the readers to answer the following questions: "Where did cash come from; what was cash used for and what was the change in cash during the fiscal year?" The total of these categories for the year ended June 30, 2023, represents a decrease in cash and cash equivalents of \$1,924,244 which is combined with beginning cash and cash equivalents of \$4,300,315 to arrive at ending cash and cash equivalents of \$2,376,071.

Notes to the financial statements - The notes provide additional information that is essential to a full understanding of the data provided in financial statements. The notes to the financial statements can be found on pages 16 - 44 of this report.

Other Information - In addition to the basic financial statements and accompanying notes, this report also presents certain *required supplementary information* concerning the Yuima Municipal Water District's progress in funding its obligation to provide pension and OPEB benefits to its employees. Required supplementary information can be found on pages 45 - 49 of this report.

ANALYSIS OF FINANCIAL POSITION AND RESULT OF OPERATIONS

The District's overall financial position continues to be affected by the implementation of the GASB 68 requirement to begin recording the Unfunded Accrued Liability of the District's pension plan, increasing costs of imported water and sometimes-unpredictable water sales. As a result of the significantly above average rainfall during the 2022-2023 fiscal year the District experienced a reduction in water sales. This reduction in sales, coupled with the ever increasing cost of imported water resulted in a reduction in the District's reserve balance in the 2022-2023 fiscal year. The reduction in the reserve balance occurred due to the use of the Rate Stabilization Reserve to help offset a significant rate increase to the consumer.

Assets and deferred outflows in excess of liabilities and deferred inflows (Net Position) for fiscal year 2022-2023 decreased \$1,404,629 over fiscal year 2022-2023, from \$18,186,687 to \$16,782,058 which correlates to the decrease as presented on the Statements of Revenues, Expenses, and Changes in Net Position. Of this amount, \$3,494,346 may be used to meet the District's ongoing obligation to citizens and creditors.

Yuima Municipal Water District Net Position		
	2023	2022
Current and other assets	\$ 10,021,962	\$ 12,351,028
Capital assets	17,543,457	17,645,081
Total Assets	\$ 27,565,419	\$ 29,996,109
Deferred Outflows of Resources	\$ 1,615,170	\$ 497,909
Long-term liabilities outstanding	\$ 7,665,325	\$ 6,217,370
Other liabilities	1,599,657	2,064,002
Total liabilities	\$ 9,264,982	\$ 8,281,372
Deferred Inflows of Resources	\$ 3,133,549	\$ 4,025,959
Net Position:		
Net Investment in Capital Assets	\$ 12,523,240	\$ 12,296,940
Restricted	764,472	-
Unrestricted	3,494,346	5,889,747
Total net position	\$ 16,782,058	\$ 18,186,687

Analysis of Net Position – Net Position is the difference between assets acquired, owned, and operated by the District and amounts owed (liabilities). In accordance with Generally Accepted Accounting Principles (GAAP), capital assets acquired through purchase, or construction by the District, are recorded at historical cost. Capital assets contributed by developers are recorded at developers' construction cost. Net Position represents the District's net worth including, but not limited to, capital contributions received to date and all investment in capital assets since formation. Net Position helps answer the following question: "Is the District, as a whole, better or worse off as a result of this year's activities?" As reported in the Statements of Net Position, the net position decreased between fiscal years ending 2022 and 2023 from \$18,186,687 to \$16,782,058. Net investment in capital assets increased \$226,300, and unrestricted net position decreased \$2,395,401.

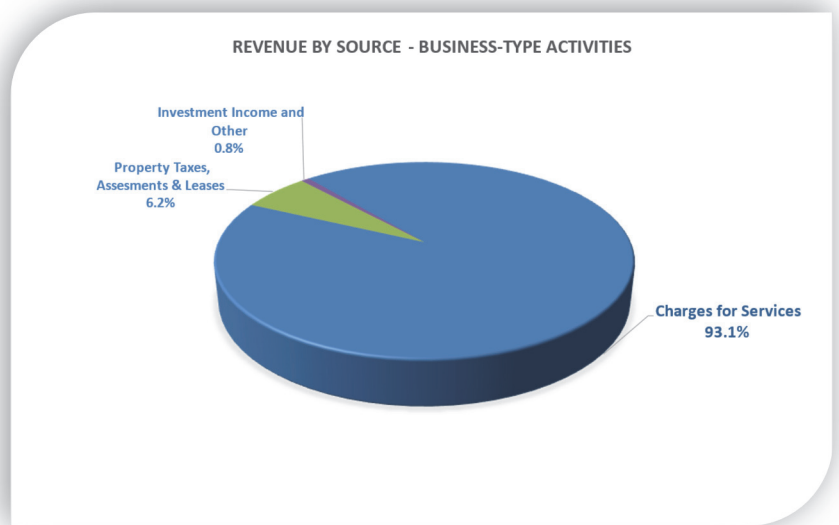
Change in Net Position & Analysis of Statement of Revenues, Expenses, and Changes in Net Position

The operating margin for the year ended June 30, 2023 of (\$2,207,826) is combined with total non-operating revenues of \$948,396, non-operating expenses of \$162,560 and Capital Contributions of 17,361 to arrive at the decrease in net position of \$1,404,629. The decrease in net position is added to the beginning net position of \$18,186,687 to arrive at the ending net position total of \$16,782,058 as of June 30, 2023.

The District's total revenues of \$13,394,296 for the 2022-23 fiscal year is comprised of \$12,445,900 for Operating and \$948,396 for Non-Operating Revenues. The annual revenue decreased \$3,619,618 or 21.3% from the prior fiscal year due to multiple factors. The largest decrease was within the Operating Revenues category and is directly associated with the Water Sales. This decrease is directly associated with the significantly above average rainfall during the fiscal year. Additionally, in an effort to smooth rate increases caused by the increase in operating costs, specifically the cost of imported water, the District employed use of its Rate Stabilization Reserve during the fiscal year.

Details of the total decrease in revenues are as follows:

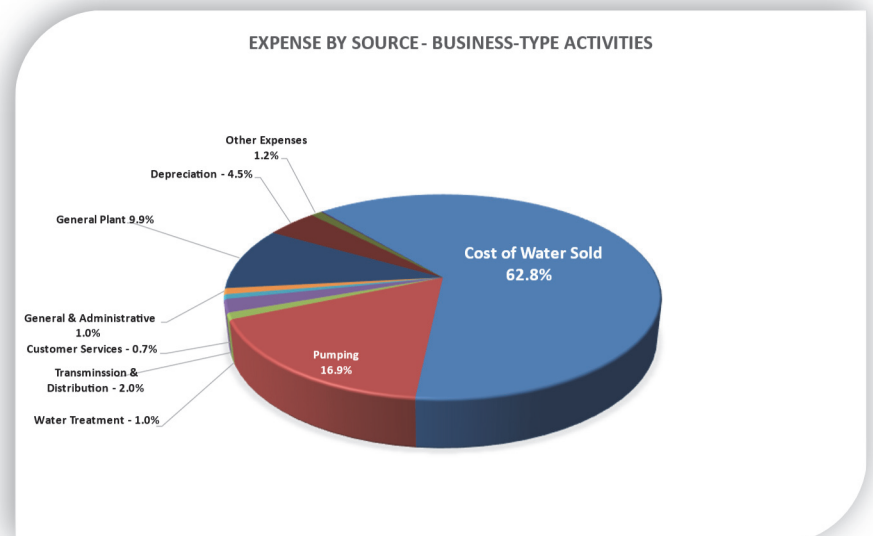
- Water Sales decreased by \$3,698,832, or 24.2% for the fiscal year ended June 30, 2023. The decrease was due to less water consumption by customers because of significant rainfall.
- Other Non-Operating Revenues decreased by \$10,650 or 1.1%, from 2021-22 to 2022-23. Although investment earnings saw a significant increase, a reduction in water availability assessments offset the increase, resulting in a small overall non-operating revenue decrease.



The District's total expenses decreased by \$1,495,852 or 9.2% in 2022-23, from \$16,312,137 to \$14,816,285. The largest decrease occurred within the Operating Expenses; specifically, the category of Purchased Water.

Details of the total decrease in expenses are as follows:

- The Purchased Water expenses realized a decrease of \$2,809,693 or 23.2%. This decrease was specifically due to the above average rainfall that caused a decrease in customer consumption.
- The General and Administrative expenses increased by \$1.3 million or 762.4%. Most of the increase is from the net pension liability increasing by \$1.8 million, net OPEB asset decreasing by \$269,930 and most of the remaining difference from the net changes in the pension and OPEB related deferred outflows and inflows of resources.



Schedule of Revenues, Expenses and Change in Net Position
Yuima General District and IDA - Combined

	Proprietary Fund		Increase/ (Decrease)	Percent Change
	2023	2022		
Operating revenues:				
Water sales & Pumping charges	\$11,575,405	\$15,274,237	(\$3,698,832)	-24.2%
Other customer fees and charges	870,495	780,631	89,864	11.5%
Total operating revenues	<u>12,445,900</u>	<u>16,054,868</u>	<u>(3,608,968)</u>	<u>-22.5%</u>
Operating expenses:				
Cost of water sold	9,304,095	12,113,788	(2,809,693)	-23.2%
Pumping and energy costs	2,500,035	2,484,924	15,111	0.6%
Water Treatment	150,179	133,268	16,911	12.7%
Transmission and distribution	307,638	328,177	(20,539)	-6.3%
Customer services	109,398	114,342	(4,944)	-4.3%
General Plant	140,034	140,641	(607)	-0.4%
General and administrative	1,476,071	171,156	1,304,915	762.4%
Depreciation	666,276	659,101	7,175	1.1%
Total operating expenses	<u>14,653,726</u>	<u>16,145,397</u>	<u>(1,491,671)</u>	<u>-9.2%</u>
Operating income (loss)	<u>(2,207,826)</u>	<u>(90,529)</u>	<u>(2,117,297)</u>	<u>2338.8%</u>
Non-operating revenues:				
Investment earnings	101,349	(130,726)	232,075	-177.5%
Property taxes, assmts, conn fees & leases	827,068	893,099	(66,031)	-7.4%
Other non-operating revenues	19,979	196,673	(176,694)	-89.8%
Total non-operating revenues	<u>948,396</u>	<u>959,046</u>	<u>(10,650)</u>	<u>-1.1%</u>
Non-operating expenses:				
Other non-operating expenses	21,924	16,364	5,560	34.0%
Interest on long term debt	140,636	150,376	(9,740)	-6.5%
Total non-operating expenses	<u>162,560</u>	<u>166,740</u>	<u>(4,180)</u>	<u>-2.5%</u>
Revenues over/(under) Expenditures	<u>(1,421,990)</u>	<u>701,777</u>	<u>(2,123,767)</u>	<u>-302.6%</u>
Capital Contributions	<u>17,361</u>	<u>-</u>	<u>17,361</u>	<u>0.0%</u>
Change in net position	<u>(1,404,629)</u>	<u>701,777</u>	<u>(2,106,406)</u>	<u>-300.2%</u>
Net position, Beginning	<u>18,186,687</u>	<u>17,484,910</u>	<u>701,777</u>	<u>4.0%</u>
Total Net Position, End of year	<u><u>16,782,058</u></u>	<u><u>18,186,687</u></u>	<u><u>(1,404,629)</u></u>	<u><u>-7.7%</u></u>

Schedule of Revenues, Expenses and Change in Position
Yuima - General District

	Proprietary Fund		Increase/ (Decrease)	Percent Change
	2023	2022		
Operating revenues:				
Water sales & Pumping charges	\$6,571,697	\$8,573,985	(\$2,002,288)	-23.4%
Other customer fees and charges	423,153	330,156	92,997	28.2%
Total operating revenues	<u>6,994,850</u>	<u>8,904,141</u>	<u>(1,909,291)</u>	<u>-21.4%</u>
Operating expenses:				
Cost of water sold	5,822,886	7,434,080	(1,611,194)	-21.7%
Pumping and energy costs	565,386	581,343	(15,957)	-2.7%
Water Treatment	21,049	23,761	(2,712)	-11.4%
Transmission and distribution	143,324	156,237	(12,913)	-8.3%
Customer services	52,369	47,839	4,530	9.5%
General Plant	58,975	63,858	(4,883)	-7.6%
General and administrative	646,414	94,389	552,025	584.8%
Depreciation	302,175	291,069	11,106	3.8%
Total operating expenses	<u>7,612,578</u>	<u>8,692,576</u>	<u>(1,079,998)</u>	<u>-12.4%</u>
Operating income (loss)	<u>(617,728)</u>	<u>211,565</u>	<u>(829,293)</u>	<u>-392.0%</u>
Non-operating revenues:				
Investment earnings	57,172	(120,283)	177,455	-147.5%
Property taxes, assmts, conn fees & leases	540,280	587,078	(46,798)	-8.0%
Other non-operating revenues	19,903	191,423	(171,520)	-89.6%
Total non-operating revenues	<u>617,355</u>	<u>658,218</u>	<u>(40,863)</u>	<u>-6.2%</u>
Non-operating expenses:				
Other non-operating expenses	362	355	7	-2.0%
Interest on long term debt	120,590	126,252	(5,662)	4.5%
Total non-operating expenses	<u>120,952</u>	<u>126,607</u>	<u>(5,655)</u>	<u>-4.5%</u>
Revenues over/(under) Expenditures	<u>(121,325)</u>	<u>743,176</u>	<u>(864,501)</u>	<u>-116.3%</u>
Capital Contributions	<u>17,361</u>	<u>-</u>	<u>17,361</u>	<u>100.0%</u>
Change in net position	<u>(103,964)</u>	<u>743,176</u>	<u>(847,140)</u>	<u>-114.0%</u>
Net position, Beginning of year	<u>8,472,395</u>	<u>7,729,219</u>	<u>743,176</u>	<u>9.6%</u>
Total Net Position, End of year	<u><u>\$8,368,431</u></u>	<u><u>\$8,472,395</u></u>	<u><u>(\$103,964)</u></u>	<u><u>-1.2%</u></u>

**Schedule of Revenues, Expenses and Change in Net Position
Improvement District A**

	Proprietary Fund		Increase/ (Decrease)	Percent Change
	2023	2022		
Operating revenues:				
Water sales & Pumping charges	\$5,003,708	\$6,700,252	(\$1,696,544)	-25.3%
Other customer fees and charges	447,342	450,475	(3,133)	-0.7%
Total operating revenues	<u>5,451,050</u>	<u>7,150,727</u>	<u>(1,699,677)</u>	<u>-23.8%</u>
Operating expenses:				
Cost of water sold	3,481,209	4,679,708	(1,198,499)	-25.6%
Pumping and energy costs	1,934,649	1,903,581	31,068	1.6%
Water Treatment	129,130	109,507	19,623	17.9%
Transmission and distribution	164,314	171,940	(7,626)	-4.4%
Customer services	57,029	66,503	(9,474)	-14.2%
General Plant	81,059	76,783	4,276	5.6%
General and administrative	829,657	76,767	752,890	980.7%
Depreciation	364,101	368,032	(3,931)	-1.1%
Total operating expenses	<u>7,041,148</u>	<u>7,452,821</u>	<u>(411,673)</u>	<u>-5.5%</u>
Operating income (loss)	<u>(1,590,098)</u>	<u>(302,094)</u>	<u>(1,288,004)</u>	<u>426.4%</u>
Non-operating revenues:				
Investment earnings	44,177	(10,443)	54,620	-523.0%
Property taxes, assmts, conn fees & leases	286,788	306,021	(19,233)	-6.3%
Other non-operating revenues	76	5,250	(5,174)	-98.6%
Total non-operating revenues	<u>331,041</u>	<u>300,828</u>	<u>30,213</u>	<u>10.0%</u>
Non-operating expenses:				
Other non-operating expenses	21,562	16,009	5,553	34.7%
Interest on long term debt	20,046	24,124	(4,078)	-16.9%
Total non-operating expenses	<u>41,608</u>	<u>40,133</u>	<u>1,475</u>	<u>3.7%</u>
Revenues over/(under) Expenditures	<u>(1,300,665)</u>	<u>(41,399)</u>	<u>(1,259,266)</u>	<u>3041.8%</u>
Capital Contributions	<u>-</u>	<u>-</u>	<u>-</u>	<u>0.0%</u>
Change in net position	<u>(1,300,665)</u>	<u>(41,399)</u>	<u>(1,259,266)</u>	<u>3041.8%</u>
Net position, Beginning of year	<u>9,714,292</u>	<u>9,755,691</u>	<u>(41,399)</u>	<u>-0.4%</u>
Total Net Position, End of year	<u><u>8,413,627</u></u>	<u><u>9,714,292</u></u>	<u><u>(1,300,665)</u></u>	<u><u>-13.4%</u></u>

CAPITAL ASSETS AND CAPITAL PROJECTS

The District's Capital Assets in service on June 30, 2023 totaled \$31,378,156 less \$13,834,699 of accumulated depreciation, for a net book value of \$17,543,457. Additional information on capital assets can be found in Note 5 to the financial statements. Capital Asset additions being depreciated totaled \$362,144 and included the following:

Capital Asset Additions			
	Yuima	IDA	Total
Annexation Fees	\$ -	\$ -	\$ -
Source of Supply	-	-	-
General Plant Additions	313,580	-	313,580
Pumping Plant	-	48,564	48,564
Water Treatment	-	-	-
Pipelines (Transmission & Distribution)	-	-	-
Total	\$ 313,580	\$ 48,564	\$ 362,144

Deletions of Capital Assets being depreciated totaled \$90,597 for retirement of equipment replacements. Also included in the total reported on the Statement of Net Position is \$262,591 in construction-in-progress, which reflects capital projects in various stages of completion. As of June 30, 2023, the following capital projects were in progress.

Construction in Progress	
<u>Yuima</u>	
AMR Meter Project	\$ 6,111
TY Yard Well 1 Project	\$ 218,322
Total	\$ 224,433
<u>IDA</u>	
Perricone Pump PRV Replacement	12,688
AMR Meter Project	25,470
Total	\$ 38,158
Total	\$ 262,591

The District's capital assets were financed through a combination of current revenues, available reserves from the capital fund and capacity (connection fee) fund, and debt issuances. The District collects capacity fees from new development. These fees are restricted and used exclusively to provide capacity to service new development and fund future construction of facilities identified in the District's Master Plan. As of June 30, 2023, all capacity fees collected in prior years have been used for this purpose. Growth in the area is slow to none. The District does not expect any change in growth in the area for the next few years. The District's CIP is expected to fluctuate from year to year depending on the construction cost of infrastructure projects that are currently under construction or are in the planning stages.

LONG-TERM DEBT

At the end of the current fiscal year, the Yuima Municipal Water District had total debt outstanding of \$7,665,324 including \$302,301 which is the portion that is due within one year. Additional information on long-term debt can be found in Note 6 to the financial statements.

The District's outstanding indebtedness as of June 30, 2023 is as follows:

Fiscal Year Ended June 30, 2023								
Long-term Debt								
Description	District	Year Issued	Total Debt	Final Maturity Date	Fixed Interest Rate	Debt Outstanding (Audited) As of June 30, 2023		
						Current	Long Term	Total
Compensated Absences	Yuima/IDA					\$ 42,143	\$ 126,427	\$ 168,570
Net Pension Liability	Yuima/IDA					\$ -	\$ 2,476,537	\$ 2,476,537
Zone 4 Tank	IDA	2013	\$ 900,000	2033	3.55%	\$ 44,087	\$ 506,130	\$ 550,217
Forebay Pump Station	Yuima	2019	\$ 5,000,000	2039	2.66%	\$ 225,000	\$ 4,245,000	\$ 4,470,000
Total			<u>\$ 5,900,000</u>			<u>\$ 311,230</u>	<u>\$ 7,354,094</u>	<u>\$ 7,665,324</u>

FUTURE INFRASTRUCTURE PLANNING

The future water supply of the District is primarily secured through the importation of water purchased from the San Diego County Water Authority ("SDCWA"). Approximately seventy percent (69%) of the District's water supply was provided through the intertie with the SDCWA for imported water. Groundwater production will continue to be a challenge for the District, and most water agencies in the State that have access to groundwater, as the recently enacted Sustainable Groundwater Management Act ("SGMA") is being implemented and will require water agencies in basins which are not in balance to reduce their pumping in conformance with the SGMA objective of realizing sustainable groundwater basins; the primary effect being the reduction in the utilization of groundwater wells to achieve and maintain the balance between groundwater recharge and withdraws. The District is working with the SDCWA and the Valley Center Municipal Water District to provide for the six to eight (6-8) cubic feet per second of additional supply to the YMWD service area for use as needed to supplement current supplies through the present intertie to the SDCWA. This project has been delayed but is expected to have the additional imported water supply available for the summer of 2024.

As part of the Master Plan development, the District intends to research ways to make use of existing local water development to supplement the more costly imported water. The District is continually committed to providing safe, reliable, sustainable supplies of water for the customers it serves.

ECONOMIC FACTORS

The District derives funding for operations from customer rates, fees, and charges. To the extent required, the District has the ability to generate additional funding resources through rate adjustments to cover the costs for providing water services. The District sets its rates annually based upon anticipated consumption. A significant reduction in consumption could have an adverse effect on the District's financial position. Listed below are a few highlights of the economic factors that impact our District.

- The District sold 37.5% of total water delivered during the fiscal year 2022-23 to one customer. This same customer has been one of the top ten water consumers in the District for the last 24 years.
- The District experienced a \$1,404,629 operating loss during fiscal year 2022-23 as compared to a \$701,777 operating gain during fiscal year 2021-22.
- In fiscal year 2022-23, the District purchased 69% of its water sold from the San Diego County Water Authority, this percentage remains static to the 2021-22 fiscal year.
- The District has invested significantly in upgrading its aging infrastructure to improve the reliability of water delivery to its customers as the District becomes more dependable on imported water supply from the San Diego

County Water Authority. Keeping the District's financial position sustainable will be critical in the future the cost of imported water and general operating costs continue to increase. The District will explore grant funding opportunities to assist with funding capital improvements. The District will also seek to enter into possible well agreements with customers to increase local production while possibly reducing imported supply at no cost to the District.

- The District has implemented several cost containment strategies to mitigate pension burdens on the District. Yuima MWD employees are now paying 100% of the employee's portion (8%) of the District's pension costs. Additionally, through attrition, and job description redevelopment the district has been able to eliminate or replace higher paying positions to realize costs savings.

CONTACTING THE DISTRICT'S FINANCIAL MANAGEMENT

This financial report is designed to provide the District's rate payers, bond investors and other interested parties with a general overview of the District's finances, and to demonstrate the District's accountability for the money it received and the stewardship of the facilities it maintains. If you have any questions about this report or need additional financial information, contact the Yuima Municipal Water District's Finance Department, Amy Reeh, General Manager, 34928 Valley Center Road, Pauma Valley, Ca. 92061, or call (760) 742-3704, or send inquiries to our website at www.yuimamwd.com.

Yuima Municipal Water District
Statement of Net Position
Proprietary Fund
June 30, 2023

ASSETS

Current Assets:

Cash and Cash Equivalents	\$ 2,376,071
Investments	2,547,502
Accounts Receivable	974,921
Leases Receivable - Current Portion	100,375
Taxes Receivable	7,135
Interest Receivable	16,717
Inventories	400,703
Prepays	25,953

Total Current Assets	6,449,377
----------------------	-----------

Noncurrent Assets:

Net OPEB Asset	786,857
Leases Receivable	2,785,728
Capital Assets, Not Being Depreciated	1,564,048
Capital Assets, Net of Depreciation	15,979,409

Total Noncurrent Assets	21,116,042
-------------------------	------------

Total Assets	27,565,419
--------------	------------

DEFERRED OUTFLOWS OF RESOURCES

Pension Related Items	1,441,626
OPEB Related Items	173,544

Total Deferred Outflows of Resources	1,615,170
--------------------------------------	-----------

LIABILITIES

Current Liabilities:

Accounts Payable	1,460,112
Deposits and Other Accrued Liabilities	76,023
Interest Payable	63,522
Compensated Absences - Current Portion	42,143
Notes Payable - Current Portion	269,087

Total Current Liabilities	1,910,887
---------------------------	-----------

Noncurrent Liabilities:

Compensated Absences	126,428
Net Pension Liability	2,476,537
Notes Payable	4,751,130

Total Noncurrent Liabilities	7,354,095
------------------------------	-----------

Total Liabilities	9,264,982
-------------------	-----------

DEFERRED INFLOWS OF RESOURCES

Lease Related Items	2,784,404
Pension Related Items	326,760
OPEB Related Items	22,385

Total Deferred Inflows of Resources	3,133,549
-------------------------------------	-----------

NET POSITION

Net Investment in Capital Assets	12,523,240
Restricted for OPEB	764,472
Unrestricted	3,494,346

Total Net Position	\$ 16,782,058
--------------------	---------------

The accompanying notes are an integral part of this statement.

Yuima Municipal Water District
Statement of Revenues, Expenses and Changes in Net Position
Proprietary Fund
Year Ended June 30, 2023

OPERATING REVENUES

Water Sales and Pumping Charges	\$ 11,575,405
Other Services	870,495
	12,445,900
Total Operating Revenues	12,445,900

OPERATING EXPENSES

Purchased Water	9,304,095
Pumping	2,500,035
Water Treatment	150,179
Transmission and Distribution	307,638
Customer Accounts	109,398
General Plant	140,034
General and Administrative	1,476,071
Depreciation	666,276
	14,653,726
Total Operating Expenses	14,653,726

Operating Income (Loss)	(2,207,826)
-------------------------	-------------

NON-OPERATING REVENUES (EXPENSES)

Property Taxes and Assessments	560,031
Availability Charges	94,688
Lease Income	172,349
Investment Earnings	101,349
Other Non-Operating Revenues	19,979
Interest Expense	(140,636)
Net Gain (Loss) on Sale of Assets	(21,372)
Other Non-Operating Expenses	(552)
	785,836
Total Non-Operating Revenues (Expenses)	785,836

CAPITAL CONTRIBUTIONS

	17,361
Change in Net Position	(1,404,629)
Net Position - Beginning	18,186,687
Net Position - Ending	\$ 16,782,058

The accompanying notes are an integral part of this statement.

Yuima Municipal Water District
Statement of Cash Flows
Proprietary Fund
Year Ended June 30, 2023

CASH FLOWS FROM OPERATING ACTIVITIES

Receipts from Customers	\$ 13,097,921
Receipts from Other Operating Activities	19,979
Receipts from Leases	121,574
Payments to Employees	(1,105,455)
Payments to Suppliers	<u>(13,157,742)</u>
Net Cash Provided by (Used for) Operating Activities	<u>(1,023,723)</u>

CASH FLOWS FROM NON-CAPITAL FINANCING ACTIVITIES

Property Taxes and Assessments	558,483
Availability Charges	<u>94,688</u>
Net Cash Provided by (Used for) Non-Capital Financing Activities	<u>653,171</u>

CASH FLOWS FROM CAPITAL AND RELATED FINANCING ACTIVITIES

Capital Capacity Fees	17,361
Acquisition of Capital Assets	(586,023)
Principal Payments on Capital Debt	(327,924)
Interest Payments on Capital Debt	<u>(144,691)</u>
Net Cash Provided by (Used for) Capital and Related Financing	<u>(1,041,277)</u>

CASH FLOWS FROM INVESTING ACTIVITIES

Purchase of Investments	(959,844)
Proceeds from the Sale of Investments	347,009
Investment Earnings	<u>100,420</u>
Net Cash Provided by (Used for) Investing Activities	<u>(512,415)</u>

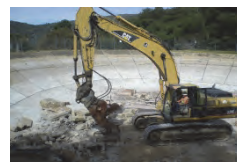
Net Increase (Decrease) in Cash and Cash Equivalents	(1,924,244)
Cash and Cash Equivalents - Beginning of Year	<u>4,300,315</u>
Cash and Cash Equivalents - End of Year	<u><u>\$ 2,376,071</u></u>

Reconciliation of Operating Income (Loss) to Net Cash Provided by (Used for) Operating Activities:

Net Operating Income (Loss)	\$ (2,207,826)
Adjustments to Reconcile Operating Income to Net Cash Provided by (Used for) Operating Activities:	
Depreciation	666,276
Receipts from Leases	121,574
Miscellaneous Revenues	19,979
Miscellaneous Expenses	(552)
(Increase) Decrease in Accounts Receivable	695,823
(Increase) Decrease in Inventories and Prepays	(28,790)
(Increase) Decrease in Net OPEB Asset (Liability)	269,930
(Increase) Decrease in Pension Related Deferred Outflows of Resources	(1,009,754)
(Increase) Decrease in OPEB Related Deferred Outflows of Resources	(107,507)
Increase (Decrease) in Accounts Payable	(416,488)
Increase (Decrease) in Compensated Absences	(9,219)
Increase (Decrease) in Deposits and Other Accrued Liabilities	(43,802)
Increase (Decrease) in Net Pension Liability	1,785,097
Increase (Decrease) in Pension Related Deferred Inflows of Resources	(532,734)
Increase (Decrease) in OPEB Related Deferred Inflows of Resources	<u>(225,730)</u>
Total Cash Provided by (Used for) Operating Activities	<u><u>\$ (1,023,723)</u></u>

The accompanying notes are an integral part of this statement.

This page was intentionally left blank



Yuima Municipal Water District
Notes to Financial Statements
Year Ended June 30, 2023

<u>NOTE</u>	<u>DESCRIPTION</u>	<u>PAGE</u>
1	Reporting Entity and Significant Accounting Policies	17 - 24
2	Cash and Investments	24 - 27
3	Fair Value Measurements	27 - 28
4	Leases Receivable	28
5	Capital Assets	29
6	Long-term Liabilities	30 - 32
7	Pension Plans	32 - 37
8	Postemployment Benefits Other than Pensions (OPEB)	37 - 42
9	Deferred Compensation Plan	42
10	Net Position	43
11	Risk Management	44
12	Commitments and Contingencies	44

Yuima Municipal Water District
Notes to Financial Statements
Year Ended June 30, 2023

1) REPORTING ENTITY AND SIGNIFICANT ACCOUNTING POLICIES

A) Reporting Entity

The Yuima Municipal Water District (the “District”) was formed in January 1963 pursuant to Section 8 of the California Municipal Water District Act of 1911 to improve the delivery of agricultural and domestic water services, and to facilitate the acquisition of a supplemental water supply from the Metropolitan Water District of California within its boundaries. The District is governed by an elected, five-member Board of Directors (the “Board”). The 1963 General Obligation Bonds financed the construction of the necessary pipelines, pumping and storage facilities to bring Colorado River water from the aqueducts owned by the Metropolitan Water District and the San Diego County Water Authority to serve the properties within its boundaries, which cover about 13,460 acres in northeastern San Diego County, California; the District maintains, develops and manages such water distribution system. The District offices are located in Pauma Valley, California.

The area now known as “Improvement District A” (IDA) was originally known as Rossmoyne Villages (“Rossmoyne”). The Palomar Mutual Water Company (“Palomar Mutual”) became Rossmoyne’s successor in interest through an agreement dated February 11, 1948. In turn, Palomar Mutual transferred all of its water rights, lands and water system, together with its functions and obligations, to the District in April, 1968.

Among the transferred obligations was a stipulated judgment (*Strub et al. v Palomar* or “*Strub et al.*”), filed November 10, 1953 and later modified, that provides for the net delivery to IDA of no more than 1,350 acre-feet of water per calendar year from the San Luis Rey River upstream of Cole Grade Road.

The District, as successor in interest to Palomar Mutual, continues to operate IDA as an independent water system (California State System No. 3700938). While the District is responsible for administering IDA’s compliance with *Strub et al.*, that stipulated judgment does not affect or bind the 70% of the District which is outside of IDA and which operates under a separate system permit (California State System No. 3701408).

The District added another 351 acres, Annexation #1, in November 1967, and another 63 acres, Annexation #2, in November 1969, by revising its boundaries pursuant to the Reorganization Act of 1965 as amended by LAFCO. The District added another six acres, Fitzsimmons Annexation, on March 26, 1991, and de-annexed 27 acres, Adams De-annexation, on March 29, 1991. Hence the District boundaries total 13,460 acres.

The Board of Directors and officers of the District at June 30, 2023 are as follows:

Name	Title	Term Expiration
Roland Simpson	President	December 2024
Steve Wehr	Vice President	December 2026
Don Broomell	Secretary/Treasurer	December 2024
Laurie Kariya	Director	December 2024
Bruce Knox	Director	December 2024

Yuima Municipal Water District
Notes to Financial Statements
Year Ended June 30, 2023

1) REPORTING ENTITY AND SIGNIFICANT ACCOUNTING POLICIES - Continued

B) Implementation of Governmental Accounting Standards Board (GASB) Pronouncements

Governmental Accounting Standard Board Statement No. 91

In May of 2019, GASB issued Statement No. 91, *Conduit Debt Obligations*. This statement was issued to improve financial reporting for certain debt obligations. It allowed entities to provide a single method of reporting conduit debt obligations by issuers and eliminate diversity in practice associated with (1) commitments extended by issuers, (2) arrangements associated with conduit debt obligations, and (3) related note disclosures. This Statement achieves those objectives by clarifying the existing definition of a conduit debt obligation; establishing that a conduit debt obligation is not a liability of the issuer; establishing standards for accounting and financial reporting of additional commitments and voluntary commitments extended by issuers and arrangements associated with conduit debt obligations; and improving required note disclosures. Statement No. 91 is effective for fiscal years beginning December 15, 2020. Due to the COVID-19 pandemic, GASB No. 95 delayed the implementation of this Statement by one year for reporting periods beginning after December 15, 2021. Currently, this statement has no effect on the District's financial statements.

Governmental Accounting Standard Board Statement No. 94

In March of 2020, GASB issued Statement No. 94, *Public-Private and Public-Public Partnerships and Availability Payment Arrangements*. The objective of this statement is to improve financial reporting by addressing issues related to public-private and public-public partnership arrangements (PPPs). Statement No. 94 is effective for fiscal years beginning after June 15, 2022, and all reporting periods thereafter. Currently, this statement has no effect on the District's financial statements.

Governmental Accounting Standard Board Statement No. 96

In May of 2020, GASB issued Statement No. 96, *Subscription-Based Information Technology Arrangements*. This statement provides guidance on the accounting and financial reporting for subscription-based information technology arrangement (SBITAs) for government end users (governments). Statement No. 95 is effective for fiscal years beginning after June 15, 2022, and all reporting periods thereafter. Currently, this statement has no effect on the District's financial statements.

Governmental Accounting Standard Board Statement No. 99

In April of 2022, GASB issued Statement No. 99, *Omnibus 2022*. The objectives of this Statement are to enhance comparability in accounting and financial reporting and to improve the consistency of authoritative literature by addressing (1) practice issues that have been identified during implementation and application of certain GASB Statements and (2) accounting and financial reporting for financial guarantees. Statement No. 99 is effective upon issuance except for requirements related to leases, PPPs, and SBITAs which is effective for fiscal years beginning after June 15, 2022, and requirements related to financial guarantees and the classification and reporting of derivative instructions within the scope of Statement No. 53 are effective for fiscal years beginning after June 15, 2023. The District has elected not to early implement GASB No. 99 and has not determined its effect on the District's financial statements.

Yuima Municipal Water District
Notes to Financial Statements
Year Ended June 30, 2023

1) REPORTING ENTITY AND SIGNIFICANT ACCOUNTING POLICIES - Continued

B) Implementation of Governmental Accounting Standards Board (GASB) Pronouncements - Continued

Governmental Accounting Standard Board Statement No. 100

In June of 2022, GASB issued Statement No. 100, *Accounting Changes and Error Corrections*. The primary objective of this Statement is to enhance accounting and financial reporting requirements for accounting changes and error corrections to provide more understandable, reliable, relevant, consistent, and comparable information for making decisions or assessing accountability. Statement No. 100 is effective for fiscal years beginning after June 15, 2023. The District has elected not to early implement GASB Statement No. 100 and has not determined its effect on the District's financial statements.

Governmental Accounting Standard Board Statement No. 101

In June of 2022, GASB issued Statement No. 101, *Compensated Absences*. The objective of this Statement is to better meet the information needs of financial statement users by updating the recognition and measurement guidance for compensated absences. That objective is achieved by aligning the recognition and measurement guidance under a unified model and by amending certain previously required disclosures. Statement No. 101 is effective for fiscal years beginning after December 15, 2023. The District has elected not to early implement GASB Statement No. 101 and has not determined its effect on the District's financial statements.

C) Basis of Presentation

The basic financial statements of the Yuima Municipal Water District have been prepared in conformity with accounting principles generally accepted in the United States of America ("GAAP"). The Governmental Accounting Standards Board ("GASB") is the accepted standard setting body for governmental accounting and financial reporting purposes.

D) Measurement Focus, Basis of Accounting and Financial Statement Presentation

The accounts of the District are organized on the basis of funds and account groups, each of which is considered a separate accounting entity. The operations of each fund are accounted for with a separate set of self-balancing accounts that comprise its assets, liabilities, deferred outflows/inflows of resources, fund equity, revenues and expenses, as appropriate. District resources are allocated to and accounted for in individual funds based upon the purposes for which they are to be spent and the means by which spending activities are controlled. Currently, the District has one enterprise fund which is described as follows:

Proprietary Funds are accounted for on the flow of *economic resources measurement focus* and use the *accrual basis of accounting*. Under this method, revenues are recorded when earned and expenses are recorded at the time liabilities are incurred. The District has one type of Proprietary Fund, which is an Enterprise Fund.

Enterprise Funds are used to account for operations where the governing body has decided that periodic determination of revenues earned, expenses incurred, and/or net income is appropriate for capital maintenance, public policy, management control, accountability or other purposes. The District maintains one Enterprise Fund, the Water Department, to account for the operations of the District's utility services.

Yuima Municipal Water District
Notes to Financial Statements
Year Ended June 30, 2023

1) REPORTING ENTITY AND SIGNIFICANT ACCOUNTING POLICIES - Continued

D) Measurement Focus, Basis of Accounting and Financial Statement Presentation - Continued

Proprietary Funds distinguish operating revenues and expenses from non-operating items. Operating revenues and expenses generally result from providing services and producing and delivering goods in connection with a proprietary fund's principal ongoing operations. All revenues and expenses not meeting this definition are reported as non-operating revenues and expenses.

When both restricted and unrestricted resources are available for use, it is the District's policy to use restricted resources first, and then use unrestricted resources as they are needed.

E) Cash, Cash Equivalents and Restricted Cash

For purposes of the statement of cash flows, cash and cash equivalents consists of short-term highly liquid investments with maturities of 90 days or less at the date of purchase.

F) Investments

As a governmental entity other than an external investment pool in accordance with GASB 31, the District's investments are stated at fair value.

In applying GASB 31, the District utilized the following methods and assumptions:

- 1) Fair value is based on quoted market prices as of the valuation date;
- 2) The portfolio did not hold investments in any of the following:
 - a) Items required to be reported at amortized cost,
 - b) Items in external pools that are not SEC-registered (excluding government sponsored pools),
 - c) Items subject to involuntary participation in an external pool,
 - d) Items associated with a fund other than the fund to which the income is assigned;
- 3) Any unrealized gain/loss resulting from the valuation will be recognized within the related fund to the extent its cash and investments' balance exceeds the cumulative value of those investments subject to GASB 31;
- 4) The gain/loss resulting from valuation will be reported within the revenue account "investment earnings" on the Statement of Activities and the Statement of Revenues, Expenditures and Changes in Fund Balance for Governmental Funds. For Proprietary Fund Types the gain/loss from valuation will be reported within the "investment earnings" account on the Statement of Activities and the Statement of Revenues, Expenses and Changes in Net Position for Proprietary Funds.

Yuima Municipal Water District
Notes to Financial Statements
Year Ended June 30, 2023

1) REPORTING ENTITY AND SIGNIFICANT ACCOUNTING POLICIES - Continued

G) Water Sales and Accounts Receivable

Water sales revenue is recorded and billed monthly when the service is rendered. During the year ended June 30, 2023, the District reported water sales to one customer which totaled approximately 37.44% as a percentage of consumption. Management has not incurred any additional expense to serve this customer, and the District has more than one source of supply to meet its needs.

H) Allowance for Uncollectible Accounts

The District does not provide an allowance for uncollectible accounts. Based upon prior experience and management's assessment of the collectability of existing specific accounts all past due accounts have been paid. When accounts become past due, they are transferred to the tax roll and eventually collected.

I) Leases

The District is a lessor for several property leases related to cell towers. The District recognizes a lease receivable and a deferred inflow of resources in the financial statements.

At the commencement of a lease, the District initially measures the lease receivable at the present value of payments expected to be received during the lease term. Subsequently, the lease receivable is reduced by the principal portion of lease payments received. The deferred inflow of resources is initially measured as the initial amount of the lease receivable, adjusted for lease payments received at or before the lease commencement date. Subsequently, the deferred inflow of resources is recognized as revenue over the life of the lease term.

Key estimates and judgements include how the District determines (1) the discount rate it uses to discount the expected lease receipts to present value, (2) lease term, and (3) lease receipts.

- The District uses its estimated incremental borrowing rate as the discount rate for leases.
- The lease term includes the noncancellable period of the lease. Lease receipts included in the measurement of the lease receivable is composed of fixed payments from the lessee.

The District monitors changes in circumstances that would require a remeasurement of its lease, and will remeasure the lease receivable and deferred inflows of resources if certain changes occur that are expected to significantly affect the amount of the lease receivable.

J) Inventories and Prepays

Inventory consists of parts, materials and supplies needed to keep the plant and equipment owned by the District in efficient operating condition to supply water to their customers without interruption of such service. It is valued at cost, and when it is used, it is charged out on the first in, first out basis. Water inventory is stated at its purchase cost using first in, first out method.

Certain payments to vendors reflect costs applicable to future accounting periods and are recorded as prepaids in the financial statements. The cost of prepaid items is recorded as expenses when consumed rather than when purchased.

Yuima Municipal Water District
Notes to Financial Statements
Year Ended June 30, 2023

1) REPORTING ENTITY AND SIGNIFICANT ACCOUNTING POLICIES - Continued

K) Capital Assets

Capital assets of the District are recorded at cost, or if donated, valued at their estimated acquisition value rather than fair market value on the date contributed. Contributed assets are recorded at the developer's cost or at the value determined by the developer at the date of contribution. The District does not capitalize interest costs incurred on the construction of capital assets. Capital assets purchased in excess of \$2,000 are capitalized if they have an expected useful life greater than one year.

Assets are depreciated using the straight-line method over their estimated useful lives as follows:

	<u>Years</u>
General Plant	5-30
Source of Supply	10-50
Pumping Plant	25
Water Treatment Plant	33 ^{1/3}
Transmission and Distribution	33 ^{1/3}

L) Compensated Absences

It is the District's policy to permit employees to accumulate earned but unused vacation, sick, comp and other leave benefits. Sick leave, upon termination, separation or retirement will be paid out at a rate of 50% of the accumulated balance. All other leave balances are paid 100% upon termination, separation or retirement. The accrued liabilities for compensated absences are reflected in the government-wide and proprietary fund financial statements. Currently, there are no compensated absences associated with the governmental activities.

M) Deferred Outflows/Inflows of Resources

In addition to assets, the statement of net position will sometimes report a separate section for deferred outflows of resources. This separate financial statement element, *deferred outflows of resources*, represents a consumption of net assets that applies to future periods and so will *not* be recognized as an outflow of resources (expense/expenditure) until then. The District has deferred outflows related to pensions and other postemployment benefits. This includes pension contributions subsequent to the measurement date of the net pension liability, other postemployment benefits contributions subsequent to the measurement date of the net OPEB liability (asset), and other amounts (see Notes 7 and 8), which are amortized by an actuarial determined period.

In addition to liabilities, the statement of net position will sometimes report a separate section for deferred inflows of resources. This separate financial statement element, *deferred inflows of resources*, represents an acquisition of net assets that applies to future periods and so will *not* be recognized as an inflow of resources (revenue) until that time. The District has deferred inflows related to leases, pensions and other postemployment benefits. Deferred inflows related to leases (see Note 4) are amortized over the lease terms. The pension and other postemployment benefits amounts (see Notes 7 and 8) are amortized by an actuarial determined period.

Yuima Municipal Water District
Notes to Financial Statements
Year Ended June 30, 2023

1) REPORTING ENTITY AND SIGNIFICANT ACCOUNTING POLICIES - Continued

N) Pensions

For purposes of measuring the net pension liability, deferred outflows/inflows of resources related to pensions, and pension expense, information about the fiduciary net position of the District's California Public Employees' Retirement System (CalPERS) plan (Plan) and additional to/deductions from the Plan's fiduciary net position have been determined on the same basis as they are reported by CalPERS. For this purpose, benefit payments (including refunds of employee contributions) are recognized when due and payable in accordance with the benefit terms. Investments are reported at fair value.

O) Other Postemployment Benefits (OPEB)

For purposes of measuring the net OPEB liability (asset), deferred outflows of resources and deferred inflows of resources related to OPEB, and OPEB expense, information about the fiduciary net position of the District's plan (OPEB Plan) and additions to/deductions from the OPEB Plan's fiduciary net position have been determined on the same basis. For this purpose, benefit payments are recognized when currently due and payable in accordance with the benefit terms. Investments are reported at fair value.

Generally accepted accounting principles require that the reported results must pertain to liability and asset information within certain defined timeframes. For this report, the following timeframes are used.

Valuation Date	June 30, 2021
Measurement Date	June 30, 2022
Measurement Period	July 1, 2021 to June 30, 2022

P) Net Position

GASB No. 63 requires that the difference between assets, liabilities and deferred outflows/inflows of resources be reported as net position. Net position is classified as either net investment in capital assets, restricted, or unrestricted.

Net position classified as net investment in capital assets consists of capital assets, net of accumulated depreciation and reduced by the outstanding principal of related debt. Restricted net position is the net position that has external constraints placed on them by creditors, grantors, contributors, laws, or regulations of other governments, or through constitutional provisions, or enabling legislation. Unrestricted net position consists of net position that does not meet the definition of net investment in capital assets or restricted net position.

Yuima Municipal Water District
Notes to Financial Statements
Year Ended June 30, 2023

1) REPORTING ENTITY AND SIGNIFICANT ACCOUNTING POLICIES - Continued

Q) Property Tax

Property taxes are assessed and collected each fiscal year according to the following property tax calendar:

Lien Date	January	
Levy Year	July 1 to June 30	
Due Dates	November 1	1 st Installment
	February 1	2 nd Installment
Delinquent Dates	December 10	1 st Installment
	April 10	2 nd Installment

Under California law, property taxes and other charges (such as assessments) are assessed and collected by counties up to 1% of assessed value, plus other increases approved by voters. Property tax revenues are pooled and then allocated to entities based on complex formulas prescribed by state statutes.

R) Capitalized Expenses

Certain administrative and general expenses, relating to assets under construction, are charged to construction in progress until the assets are ready for their intended use. Upon completion of major utility plant additions, the capitalized cost is recorded as part of the asset to which it is related and is depreciated over the estimated useful life of the related asset.

S) Use of Estimates

The financial statements have been prepared in accordance with accounting principles generally accepted in the United States of America and necessarily include amounts based on estimates and assumptions by Management. Actual results could differ from those estimates.

2) CASH AND INVESTMENTS

Cash and Investments

Cash and Investments are classified in the accompanying financial statements as follows:

Statement of Net Position:	
Cash and Cash Equivalents	\$ 2,376,071
Investments	<u>2,547,502</u>
Total Cash and Investments	<u>\$ 4,923,573</u>

Cash and investments consist of the following:

Cash on Hand	\$ 500
Deposits with Financial Institutions	1,790,341
Investments	<u>3,132,732</u>
Total Cash and Investments	<u>\$ 4,923,573</u>

Yuima Municipal Water District
Notes to Financial Statements
Year Ended June 30, 2023

2) CASH AND INVESTMENTS - Continued

Investments Authorized by the California Government Code and the District's Investment Policy

The table below identifies the investment types that are authorized by the District's investment policy. The table also identifies certain provisions of the California Government Code (or the District's investment policy, where more restrictive) that address interest rate risk, credit risk, and concentration of credit risk.

Authorized Investment Type	Maximum Maturity	Maximum Percentage Of Portfolio ⁽¹⁾	Maximum Investment In One Issuer
Local Agency Bonds	5 years	None	None
U.S. Treasury Obligations	5 years	None	None
U.S. Agency Securities	5 years	None	None
Negotiable Certificates of Deposit	1 year ⁽²⁾	30%	\$500,000
Local Agency Investment Fund (LAIF)	N/A	None	None
JPA Pools (Other Investment Pools)	N/A	None	None

⁽¹⁾ Excluding amounts held by bond trustee that are not subject to California Government Code Restrictions.

⁽²⁾ The District did purchase certificates of deposits over 1 year which were reviewed by the Board of Directors.

Disclosures Relating to Interest Rate Risk

Interest rate risk is the risk that changes in market interest rates will adversely affect the fair value of an investment. Generally, the longer the maturity of an investment, the greater the sensitivity of its fair value to changes in market interest rates. One of the ways that the District manages its exposure to interest rate risk is by purchasing a combination of shorter term and longer term investments and by timing cash flows from maturities so that a portion of the portfolio is maturing or coming close to maturity evenly over time as necessary to provide the cash flow and liquidity needed for operations.

As of June 30, 2023, the District had the following investments:

		Maturity Date	Weighted Average Maturity (Years)
State Investment Pool (LAIF)	\$ 2,120,912	N/A	1.07
U.S. Treasury Obligations	249,165	07/27/23	0.08
U.S. Agency Securities	<u>762,655</u>	Various	3.16
Total	<u>\$ 3,132,732</u>		

* The District has various non-negotiable Certificates of Deposit with various maturity dates; however, these amounts are considered to be deposits with institutions rather than investments.

Yuima Municipal Water District
Notes to Financial Statements
Year Ended June 30, 2023

2) CASH AND INVESTMENTS - Continued

Disclosures Relating to Interest Rate Risk - Continued

Generally, credit risk is the risk that an issuer of an investment will not fulfill its obligation to the holder of the investment. This is measured by the assignment of a rating by a nationally recognized statistical rating organization. Presented below is the minimum rating required by (where applicable) the California Government Code or the District's investment policy, or debt agreements, and the actual rating as of year end for each investment type.

Investment Type		Minimum Legal Rating	Exempt From Disclosure	Rating as of Year End		
				AAA	Aa	Not Rated
State Investment Pool (LAIF)	\$ 2,120,912	N/A	\$	\$	\$ 2,120,912	
U.S. Treasury Obligations	249,165	N/A	249,165			
U.S. Agency Securities	<u>762,655</u>	N/A	<u>762,655</u>			
Total	<u>\$ 3,132,732</u>		<u>\$ 1,011,820</u>	<u>\$ 0</u>	<u>\$ 2,120,912</u>	

Concentration of Credit Risk

The investment policy of the District contains no limitation on the amount that can be invested in any one issuer beyond that stipulated by the California Government Code. Investments in any one issuer (other than U.S. Treasury securities, mutual funds, and external investment pools) that represent 5% or more of total District investments:

Issuer	Investment Type	Reported Amount
Federal Home Loan Banks	U.S. Agency Securities	\$ 762,655

Custodial Credit Risk

Custodial credit risk for deposits is the risk that, in the event of the failure of a depository financial institution, a government will not be able to recover its deposits or will not be able to recover collateral securities that are in the possession of an outside party. The custodial credit risk for investments is the risk that, in the event of the failure of the counterparty (e.g., broker-dealer) to a transaction, a government will not be able to recover the value of its investment or collateral securities that are in the possession of another party. The California Government Code and the District's investment policy do not contain legal or policy requirements that would limit the exposure to custodial credit risk for deposits or investments, other than the following provisions for deposits and investments: The California Government Code requires that a financial institution secure deposits made by state or local government units by pledging securities in an undivided collateral pool held by a depository regulated under state law (unless so waived by the governmental unit). The market value of the pledged securities in the collateral pool must equal at least 110% of the total amount deposited by the public agencies. California law also allows financial institutions to secure District deposits by pledging first trust deed mortgage notes having a value of 150% of the secured public deposits. Negotiable certificates of deposits must be fully insured and have a rating of satisfactory or better.

As of June 30, 2023, none of the District's deposits with financial institutions that were in excess of federal depository insurance limits were held in uncollateralized accounts.

Yuima Municipal Water District
Notes to Financial Statements
Year Ended June 30, 2023

2) CASH AND INVESTMENTS - Continued

Local Agency Investment Fund (LAIF)

The yield of LAIF for the quarter ended June 30, 2023 was 3.15%. The estimated amortized cost and fair value of the LAIF Pool at June 30, 2023 was \$179,160,181,982 and \$176,442,053,163, respectively. The District's share of the Pool at June 30, 2023 was approximately 0.001202 percent.

The LAIF is a special fund of the California State Treasury through which local governments may pool investments. It is regulated by California Government Code Section 16429 under the oversight of the Treasurer of the State of California. Each district may invest up to \$75,000,000 in the Fund. Investments in LAIF are highly liquid, as deposits can be converted to cash within twenty-four hours without loss of interest. Investments in LAIF are secured by the full faith and credit of the State of California. The fair value of the District's investment in this Pool is reported in the accompanying financial statements based upon the District's pro-rata share of the fair value provided by LAIF for the entire LAIF portfolio. The balance available for withdrawal is based on the accounting records maintained by LAIF, which are recorded on an amortized cost basis. Included in LAIF's investment portfolio are certain derivative securities or similar products in the form of structured notes totaling \$2,300,000,000 and asset-backed securities totaling \$2,660,770,000. LAIF's (and the District's) exposure to risk (credit, market or legal) is not currently available.

3) FAIR VALUE MEASUREMENTS

Governmental Accounting Standards Board (GASB) Statement No. 72, Fair Value Measurements and Application, provides the framework for measuring fair value. The framework provides a fair value hierarchy that prioritizes the inputs to valuation techniques used to measure fair value with Level 1 given the highest priority and Level 3 the lowest priority. The three levels of the fair value hierarchy are as follows:

Level 1 inputs are quoted prices (unadjusted) in active markets for identical assets or liabilities that the organization has the ability to access at the measurement date.

Level 2 inputs are inputs other than quoted prices included within *Level 1* that are observable for the asset or liability, either directly or indirectly. *Level 2* inputs include the following:

- a. Quoted prices for similar assets or liabilities in active markets.
- b. Quoted prices for identical or similar assets or liabilities in markets that are not active.
- c. Inputs other than quoted prices that are observable for the asset or liability (for example, interest rates and yield curves observable at commonly quoted intervals, volatilities, prepayment speeds, loss severities, credit risks, and default rates).
- d. Inputs that are derived principally from or corroborated by observable market data by correlation or other means (market-corroborated inputs).

Level 3 inputs are unobservable inputs for the asset or liability.

Yuima Municipal Water District
Notes to Financial Statements
Year Ended June 30, 2023

3) FAIR VALUE MEASUREMENTS - Continued

Fair value of assets measured on a recurring basis, are as follows:

	Fair Value	Uncategorized	Significant Other Observable Inputs (Level 2)
Investments:			
State Investment Pool (LAIF)	\$ 2,120,912	\$ 2,120,912	\$
U.S. Treasury Obligations	249,165		249,165
U.S. Agency Securities	762,655		762,655
Total Investments	\$ 3,132,732	\$ 2,120,912	\$ 1,011,820

The State Investment Pool (LAIF) is exempt under GASB No. 72 fair value measurements. The District uses the market approach for Level 2 investments by using information generated by market transactions involving identical or similar assets, liabilities, or groups of assets and liabilities. Less actively traded securities use valuation models, such as a matrix pricing technique, by comparing the securities' relationship to other benchmark quoted securities or the most recent price obtained from the market.

4) LEASES RECEIVABLE

The District has entered into three cell site leases with five-year lease terms and additional extensions from 20 to 25 years. The District also has a cell site lease that is month to month. The lessees are required to make annual fixed payments ranging from \$20,516 to \$114,721, with discount rates of 0.22%. As of June 30, 2023, the lease receivable is \$2,886,103 and deferred inflows of resources is \$2,784,404. The District recognized \$172,349 of lease revenue during the fiscal year.

Yuima Municipal Water District
Notes to Financial Statements
Year Ended June 30, 2023

5) CAPITAL ASSETS

Capital asset activity for the year was as follows:

	<u>Beginning Balance</u>	<u>Increases</u>	<u>Decreases</u>	<u>Ending Balance</u>
Capital Assets, Not Depreciated:				
Land and Improvements	\$ 1,301,457	\$	\$	\$ 1,301,457
Construction in Progress	<u>38,711</u>	<u>223,880</u>	<u></u>	<u>262,591</u>
Total Capital Assets Not Depreciated	<u>1,340,168</u>	<u>223,880</u>	<u>0</u>	<u>1,564,048</u>
Capital Assets, Being Depreciated:				
General Plant	2,327,678	313,580	65,846	2,575,412
Source of Supply	8,846,123			8,846,123
Pumping Plant	9,250,260	48,564	24,751	9,274,073
Water Treatment Plant	199,226			199,226
Transmission and Distribution Plant	<u>8,919,274</u>	<u></u>	<u></u>	<u>8,919,274</u>
Total Capital Assets, Being Depreciated	<u>29,542,561</u>	<u>362,144</u>	<u>90,597</u>	<u>29,814,108</u>
Less Accumulated Depreciation:				
General Plant	(1,858,615)	(91,636)	(65,846)	(1,884,405)
Source of Supply	(2,912,400)	(171,251)		(3,083,651)
Pumping Plant	(2,343,908)	(230,112)	(3,379)	(2,570,641)
Water Treatment Plant	(97,823)	(4,634)		(102,457)
Transmission and Distribution Plant	<u>(6,024,902)</u>	<u>(168,643)</u>	<u></u>	<u>(6,193,545)</u>
Total Accumulated Depreciation	<u>(13,237,648)</u>	<u>(666,276)</u>	<u>(69,225)</u>	<u>(13,834,699)</u>
Total Capital Assets, Being Depreciated, Net	<u>16,304,913</u>	<u>(304,132)</u>	<u>21,372</u>	<u>15,979,409</u>
Capital Assets, Net of Depreciation	<u>\$ 17,645,081</u>	<u>\$ (80,252)</u>	<u>\$ 21,372</u>	<u>\$ 17,543,457</u>

Depreciation expense was charged to functions/programs of the primary government as follows:

Water Enterprise	\$ 666,276
------------------	------------

Yuima Municipal Water District
Notes to Financial Statements
Year Ended June 30, 2023

6) LONG-TERM LIABILITIES

The following is a summary of changes in Long-term liabilities for the year:

Description	Beginning Balance	Additions	Deletions	Ending Balance	Due Within One Year
Compensated Absences (Note 1)	\$ 177,789	\$ 35,228	\$ 44,447	\$ 168,570	\$ 42,143
Net Pension Liability (Note 7)	691,440	2,035,657	250,560	2,476,537	
Direct Borrowings - Note Payable:					
2013 Station 1 Note	2,007		2,007	0	
2013 Station 4 Note	4,594		4,594	0	
2013 Installment Note	656,540		106,323	550,217	44,087
2019 Installment Note	<u>4,685,000</u>		<u>215,000</u>	<u>4,470,000</u>	<u>225,000</u>
 Total	 <u>\$ 6,217,370</u>	 <u>\$ 2,070,885</u>	 <u>\$ 622,931</u>	 <u>\$ 7,665,324</u>	 <u>\$ 311,230</u>

Direct Borrowing - Notes Payable - 2013 Station 1 Note - In August 2012, the District entered into an On-Bill Financing agreement with San Diego Gas & Electric Company for \$120,393 with no interest. The imputed interest on the loan was not significant to the note payable. The agreement is to provide financing for Station 1 IDA improvements that will provide energy efficiency savings. In the event of default, the District will be required to repay the unpaid loan balance within 30 days. The payments are due in monthly installments on the District's utility bills from San Diego Gas & Electric Company of \$1,003, commencing September 4, 2012 through September 4, 2022. The note payable was paid off during the 2023 fiscal year.

Direct Borrowing - Notes Payable - 2013 Station 4 Note - In January 2013, the District entered into an On-Bill Financing agreement with San Diego Gas & Electric Company for \$78,753 with no interest. The imputed interest on the loan was not significant to the note payable. The agreement is to provide financing for Station 4 IDA improvements that will provide energy efficiency savings. In the event of default, the District will be required to repay the unpaid loan balance within 30 days. The payments are due in monthly installments on the District's utility bills from San Diego Gas & Electric Company of \$656, commencing February 1, 2013 through February 1, 2023. The note payable was paid off during the 2023 fiscal year.

Yuima Municipal Water District
Notes to Financial Statements
Year Ended June 30, 2023

6) LONG-TERM LIABILITIES - Continued

Direct Borrowing - Notes Payable - 2013 Installment Note - In July 2013, the District entered into a Loan and Installment Sale agreement with City National Bank for \$2,420,000 with interest rate of 2.35% - 3.55%. The agreement is to provide financing for the refinancing of two installment sale agreements and for the acquisition and construction of a 1.2 million gallon water storage tank and pump station. In the event of default, any outstanding amounts become immediately due and payable. The payments are due in semiannual installments commencing July 15, 2014 through July 15, 2033. The District only borrowed \$2,372,463 of the \$2,420,000 Installment Note since it made an additional debt service payment on the 2007 Installment Note before it was refinanced.

For the Year Ended June 30,	Principal	Interest	Total
2024	\$ 44,087	\$ 19,145	\$ 63,232
2025	45,666	17,566	63,232
2026	47,301	15,930	63,231
2027	48,995	14,236	63,231
2028	50,750	12,482	63,232
2029-2033	282,353	33,806	316,159
2034	31,065	551	31,616
Total	\$ 550,217	\$ 113,716	\$ 663,933

Pledged Revenues

The District has pledged a portion of future water activities revenues to repay its 2013 Installment Note payable to City National Bank under the agreement with Municipal Finance Corporation. The note payable is secured solely by operating revenues from the proprietary fund. Total principal and interest remaining on the note payable is \$663,933 payable through fiscal year 2034. For the current year, principal and interest paid by the operating revenues were \$106,323 and \$21,514, respectively.

Yuima Municipal Water District
Notes to Financial Statements
Year Ended June 30, 2023

6) LONG-TERM LIABILITIES - Continued

Direct Borrowing - Notes Payable - 2019 Installment Note - In November 2019, the District entered into an Installment Purchase agreement with BBVA USA for \$5,000,000 with an interest rate of 2.66%. The agreement is to provide financing for the acquisition and construction of the Forebay Pump Station. In the event of default, any outstanding amounts become immediately due and payable. The payments are due in semiannual installments commencing January 15, 2020 through July 15, 2039.

For the Year Ended June 30,	Principal	Interest	Total
2024	\$ 225,000	\$ 117,439	\$ 342,439
2025	220,000	111,454	331,454
2026	235,000	105,469	340,469
2027	240,000	99,218	339,218
2028	245,000	92,834	337,834
2029-2033	1,320,000	362,292	1,682,292
2034-2038	1,500,000	176,358	1,676,358
2039-2040	485,000	12,968	497,968
Total	\$ 4,470,000	\$ 1,078,032	\$ 5,548,032

Pledged Revenues

The District has pledged a portion of future water activities revenues to repay its 2019 Installment Note payable to BBVA USA. The note payable is secured solely by operating revenues from the proprietary fund. Total principal and interest remaining on the note payable is \$5,548,032 payable through fiscal year 2040. For the current year, principal paid was \$215,000 and interest paid by the operating revenues was \$123,225.

7) PENSION PLANS

A) General Information about the Pension Plans

Plan Descriptions

All qualified permanent and probationary employees are eligible to participate in the Public Agency Cost-Sharing Multiple-Employer Defined Benefit Pension Plan (Plan) administered by the California Public Employees' Retirement System (CalPERS). The Plan consists of individual rate plans (benefit tiers) within a safety risk pool (police and fire) and a miscellaneous risk pool (all other). Plan assets may be used to pay benefits for any employer rate plan of the safety and miscellaneous pools. Accordingly, rate plans within the safety or miscellaneous pools are not separate plans under GASB Statement No. 68. Individual employers may sponsor more than one rate plan in the miscellaneous or safety risk pools. Currently, the District only sponsors rate plans in the miscellaneous risk pools. Benefit provisions under the Plan are established by State statute and District resolution. CalPERS issues publicly available reports that include a full description of the pension plan regarding provisions, assumptions and membership information that can be found on the CalPERS website.

Yuima Municipal Water District
Notes to Financial Statements
Year Ended June 30, 2023

7) PENSION PLANS - Continued

A) General Information about the Pension Plans - Continued

Benefits Provided

CalPERS provides service retirement and disability benefits, annual cost of living adjustments and death benefits to plan members, who must be public employees and beneficiaries. Benefits are based on years of credited service, equal to one year of fulltime employment. Members with five years of total service are eligible to retire at age 50 with statutorily reduced benefits. All members are eligible for non-duty disability benefits after 10 years of service. The death benefit is one of the following: the Basic Death Benefit, the 1957 Survivor Benefit, or the Optional Settlement 2W Death Benefit. The cost of living adjustments for each plan are applied as specified by the Public Employees' Retirement Law.

The rate plan provisions and benefits in effect at June 30, 2023, are summarized as follows:

	Miscellaneous	
	Prior to January 1, 2013	On or After January 1, 2013
Hire Date		
Benefit Formulas	2% at 55 3% at 60	2% at 62
Benefit Vesting Schedule	5 Years Service	5 Years Service
Benefit Payments	Monthly for Life	Monthly for Life
Retirement Age	50 - 63+	50 - 67+
Monthly Benefits, as a % of Eligible Compensation	1.426% - 2.418%	1% - 2.5%
Required Employee Contribution Rates	8%	6.75%
Required Employer Contribution Rates	15.25%	7.47%

Contributions

Section 20814(c) of the California Public Employees' Retirement Law requires that the employer contribution rates for all public employers be determined on an annual basis by the actuary and shall be effective on the July 1 following notice of a change in the rate. Funding contributions for both Plans are determined annually on an actuarial basis as of June 30 by CalPERS. The actuarially determined rate is the estimated amount necessary to finance the costs of benefits earned by employees during the year, with an additional amount to finance any unfunded accrued liability. The District is required to contribute the difference between the actuarially determined rate and the contribution rate of employees.

The District's contributions to the Plan for the year ended June 30, 2023 were \$281,427.

Yuima Municipal Water District
Notes to Financial Statements
Year Ended June 30, 2023

7) PENSION PLANS - Continued

B) Pension Liabilities, Pension Expenses and Deferred Outflows/Inflows of Resources Related to Pensions

The District reported net pension liability for its proportionate shares of the net pension liability of the Plan of \$2,476,537.

The District's net pension liability for the Plan is measured as the proportionate share of the net pension liability. The net pension liability of each of the Plan is measured as of June 30, 2022, and the total pension liability for the Plan used to calculate the net pension liability was determined by an actuarial valuation as of June 30, 2021 rolled forward to June 30, 2022 using standard update procedures. The District's proportion of the net pension liability was based on a projection of the District's long-term share of contributions to the pension plans relative to the projected contributions of all participating employers, actuarially determined.

The District's proportionate share of the net pension liability as of June 30, 2021 and 2022 (measurement periods) was as follows:

	CalPERS Pension Plan
Proportion - June 30, 2021	0.03641%
Proportion - June 30, 2022	0.05292%
Change - Increase (Decrease)	(0.01651)%

For the year ended June 30, 2023, the District recognized pension expense/(credit) of \$524,036. At June 30, 2023, the District's reported deferred outflows of resources and deferred inflows of resources related to pensions from the following sources:

	Deferred Outflows of Resources	Deferred Inflows of Resources
Pension contributions subsequent to measurement date	\$ 281,427	\$
Differences between actual and expected experience	49,734	(33,309)
Changes in assumptions	253,773	
Change in employer's proportion and differences between the employer's contributions and the employer's proportionate share of contributions	403,056	(293,451)
Net differences between projected and actual earnings on plan investments	453,636	
Total	\$ 1,441,626	\$ (326,760)

Yuima Municipal Water District
Notes to Financial Statements
Year Ended June 30, 2023

7) PENSION PLANS - Continued

B) Pension Liabilities, Pension Expenses and Deferred Outflows/Inflows of Resources Related to Pensions - Continued

The \$281,427 reported as deferred outflows of resources related to contributions subsequent to the measurement date will be recognized as a reduction of the net pension liability in the year ended June 30, 2024. Other amounts reported as deferred outflows of resources and deferred inflow of resources related to pensions will be recognized as pension expense as follows:

Year Ended June 30	Deferred Outflows/Inflows of Resources
2024	\$ 190,648
2025	226,873
2026	138,459
2027	277,459

Actuarial Assumptions

The total pension liabilities in the June 30, 2021 actuarial valuation were determined using the following actuarial assumptions:

	CalPERS Pension Plan
Valuation Date	June 30, 2021
Measurement Date	June 30, 2022
Actuarial Cost Method	Entry-Age Normal
Actuarial Assumptions:	
Discount Rate	6.90%
Inflation	2.30%
Projected Salary Increase	Varies by Entry Age and Service
Investment Rate of Return	6.90%
Mortality Rate Table ⁽¹⁾	Derived using CalPERS' Membership Data for all Funds
Post Retirement Benefit Increase	The lesser of contract COLA or 2.3% until Purchasing Power Protection Allowance Floor on Purchasing Power applies, 2.30% thereafter.

⁽¹⁾The Mortality Rate Table was derived based on CalPERS-specific data. The probabilities of mortality are based on the 2021 CalPERS Experience Study for the period from 2001 to 2019. Pre-retirement and Post-retirement mortality rates include generational mortality improvement using 80% of scale MP 2020 published by the Society of Actuaries. For more details on this table, please refer to the CalPERS Experience Study and Review of Actuarial Assumptions report from November 2021 that can be found on the CalPERS website.

Yuima Municipal Water District
Notes to Financial Statements
Year Ended June 30, 2023

7) PENSION PLANS - Continued

B) Pension Liabilities, Pension Expenses and Deferred Outflows/Inflows of Resources Related to Pensions - Continued

Discount Rate

The discount rate used to measure the total pension liability was 6.90 percent. The projection of cash flows used to determine the discount rate assumed that contributions from plan members will be made at the current member contributions rates and that contributions from employers will be made at statutorily required rates, actuarially determined. Based on those assumptions, the Plan's fiduciary net position was projected to be available to make all projected future benefit payments of current plan members. Therefore, the long-term expected rate of return on plan investments was applied to all periods of project benefit payments to determine the total pension liability.

Long-term Expected Rate of Return

The long-term expected rate of return on pension plan investments was determined using a building-block method in which best-estimate ranges of expected future real rates of return (expected returns, net of pension plan investment expense and inflation) are developed for each major asset class.

In determining the long-term expected rate of return, CalPERS took into account both short-term and long-term market return expectations. Using historical returns of all the funds' asset classes, expected compound (geometric) returns were calculated over the next 20 years using a building-block approach. The expected rate of return was then adjusted to account for assumed administrative expenses of 10 basis points.

The expected real rates to return by asset class are as follows:

Asset Class ^(a)	Assumed Asset Allocation	Real Return Years ^{(a),(b)}
Global Equity - Cap-weighted	30.0%	4.54%
Global Equity - Non-Cap-weighted	12.0%	3.84%
Private Equity	13.0%	7.28%
Treasury	5.00%	0.27%
Mortgage-backed securities	5.00%	0.50%
Investment Grade Corporates	10.0%	1.56%
High Yield	5.0%	2.27%
Emerging Market Debt	5.0%	2.48%
Private Debt	5.0%	3.57%
Real Assets	15.0%	3.21%
Leverage	(5.0)%	(0.59)%
Total	<u>100%</u>	

^(a) An expected inflation of 2.30% used for this period.

^(b) Figures are based on the 2021 Asset Liability Management study.

Yuima Municipal Water District
Notes to Financial Statements
Year Ended June 30, 2023

7) PENSION PLANS - Continued

B) Pension Liabilities, Pension Expenses and Deferred Outflows/Inflows of Resources Related to Pensions - Continued

Sensitivity of the Proportionate Share of the Net Pension Liability to Changes in the Discount Rate

The following presents the District’s proportionate share of the net pension liability for the Plan, calculated using the discount rate for each Plan, as well as what the District’s proportionate share of the net pension liability would be if it were calculated using a discount rate that is 1-percentage point lower or 1-percentage point higher than the current rate:

	CalPERS Pension Plan
1% Decrease Net Pension Liability	5.90% \$ 4,091,174
Current Discount Rate Net Pension Liability	6.90% \$ 2,476,537
1% Increase Net Pension Liability	7.90% \$ 1,148,091

Pension Plan Fiduciary Net Position

Detailed information about the Plan’s fiduciary net positions is available in the separately issued CalPERS financial reports.

Payable to the Pension Plan

The District had no contributions payable to the pension plan required for the year ended June 30, 2023.

8) POSTEMPLOYMENT BENEFITS OTHER THAN PENSIONS (OPEB)

Plan Description

In May 2000, the District’s Board of Directors approved and adopted a postemployment healthcare plan ("the Retiree Health Benefit Plan" or "RHB Plan") for the benefit of its management employees to be effective July 1, 2000. The plan is permitted under Government Code Section 53200 et. Seq. The Board of Directors establishes and has the authority to amend the plan provisions. The Board of Directors amended the plan on April 25, 2011 to a defined contribution plan effective July 1, 2011 for new management employees. Participants in the plan as of June 30, 2011 will continue to receive benefits under the defined benefit plan’s provisions prior to this amendment. A separate financial report is not prepared for the Retiree Health Benefit Plan.

Yuima Municipal Water District
Notes to Financial Statements
Year Ended June 30, 2023

8) POSTEMPLOYMENT BENEFITS OTHER THAN PENSIONS (OPEB) - Continued

Plan Description - Continued

In September 2010, the District established an irrevocable trust fund through the California Public Employees’ Retiree Benefits Trust (CERBT), an agent multiple-employer postemployment healthcare trust administered by CalPERS, which acts as a common investment and administrative agent for participating public employers within the State of California. CalPERS issues a separate Annual Comprehensive Financial Report. Copies of the CalPERS’ annual financial report may be obtained from the CalPERS Executive Office, 400 P Street, Sacramento, California 95814.

Funding Policy

Under the defined contribution plan, contributions to the plan are made solely by the District which are established and may be amended by the Board of Directors. The District contributes 100% of the health insurance premiums for an eligible retirement management employee and spouse, not to exceed:

- \$320 per month for retiree and spouse coverage;
- \$200 per month for retiree only coverage; and
- \$160 per month for retiree's spouse only coverage.

The District's contribution toward the health insurance premiums will cease when the retired management employee and spouse reach age 65.

Employees Covered

As of June 30, 2021 actuarial valuation, the following current and former employees were covered by the benefit terms under the RHB Plan:

Active employees	1
Inactive employees or beneficiaries currently receiving benefits	4
Inactive employees entitled to, but not yet receiving benefits	0
Total	5

Contributions

The annual contribution is based on the actuarially determined contribution. For the fiscal year ended June 30, 2023, the District’s cash contributions were \$42,430 in benefit payments and the estimated implied subsidy was \$3,475 resulting in total payments of \$45,905.

Yuima Municipal Water District
Notes to Financial Statements
Year Ended June 30, 2023

8) POSTEMPLOYMENT BENEFITS OTHER THAN PENSIONS (OPEB) - Continued

Net OPEB Liability (Asset)

The District's net OPEB liability (asset) was measured as of June 30, 2022 and the total OPEB liability used to calculate the net OPEB liability (asset) was determined by an actuarial valuation dated June 30, 2021 based on the following actuarial methods and assumptions:

Actuarial Assumptions

Valuation Date	June 30, 2021
Actuarial Cost Method	Entry Age Normal, Level Percentage of Payroll
Amortization Method	Level Percent of Pay
Amortization Period	30-Year Fixed Period for 2022/23
Asset Valuation Method	Market Value of Assets
Discount Rate	5.25% at June 30, 2022, 4.75% at June 30, 2021
Investment Rate of Return	5.25% at June 30, 2022, 4.75% at June 30, 2021
General Inflation	2.50%
Salary Increases	Aggregate - 2.75%
	Merit - CalPERS 1997-2015 Experience Study ⁽¹⁾
Medical Trend	Non-Medicare - 6.5% for 2023, decreasing to an ultimate rate of 3.75% in 2076.
	Medicare - 5.65% for 2023, decreasing to an ultimate rate of 3.75% in 2076.
Mortality, Retirement, Disability Termination	CalPERS 1997-2015 Experience Study ⁽¹⁾
Mortality Improvement	Mortality projected fully generational with Scale MP-2021
Participation at Retirement	100% of future eligible retirees will elect coverage.
Surviving Spouse Participation	100% of spouses will continue coverage upon the death of the retiree.

⁽¹⁾ The Experience Study Report may be accessed on the CalPERS website www.calpers.ca.gov under Forms and Publications.

The long-term expected rate of return on OPEB plan investments was determined using a building block method in which best-estimate ranges of expected future real rates of return (expected returns, net of OPEB plan investment expense and inflation) are developed for each major asset class. These ranges are combined to produce the long-term expected rate of return by weighting the expected future real rates of return by the target asset allocation percentage and by adding expected inflation. Best estimates of arithmetic real rates of return for each major asset class included in the OPEB plan's target asset are summarized in the following table:

<u>Asset Class</u>	<u>Target Allocation CERBT-Strategy 3</u>	<u>Long-term Expected Real Rate of Return</u>
Global Equity	23%	4.56%
Fixed Income	51%	0.78%
TIPS	9%	(0.08)%
Commodities	3%	1.22%
REITs	14%	4.06%
Total	<u>100%</u>	

Yuima Municipal Water District
Notes to Financial Statements
Year Ended June 30, 2023

8) POSTEMPLOYMENT BENEFITS OTHER THAN PENSIONS (OPEB) - Continued

Discount Rate

The discount rate used to measure the total OPEB liability (asset) was 5.25 percent. The projection of cash flows used to determine the discount rate assumed that District contributions will be made at rates equal to the actuarially determined contribution rates. Based on those assumptions, the OPEB plan's fiduciary net position was projected to be available to make all projected OPEB payments for current active and inactive employees and beneficiaries. Therefore, the long-term expected rate of return on OPEB plan investments was applied to all periods of projected benefit payments to determine the total OPEB liability (asset).

Changes in the OPEB Liability (Asset)

The changes in the net OPEB liability (asset) for the Plan are as follows:

	Increase (Decrease)		
	Total OPEB Liability (a)	Plan Fiduciary Net Position (b)	Net OPEB Liability/(Asset) (c) = (a) - (b)
Balance at June 30, 2022 <i>(Measurement Date June 30, 2021)</i>	\$ 664,464	\$ 1,721,251	\$ (1,056,787)
Changes Recognized for the Measurement Period:			
Service Cost	1,515		1,515
Interest	30,393		30,393
Changes of benefit terms	149,890		149,890
Changes of Assumptions	(44,771)		(44,771)
Contributions - Employer		52,251	(52,251)
Net Investment Income		(184,717)	184,717
Benefit Payments	(52,251)	(52,251)	0
Administrative Expense		(437)	437
	84,776	(185,154)	269,930
Net Changes			
Balance at June 30, 2023 <i>(Measurement Date June 30, 2022)</i>	\$ 749,240	\$ 1,536,097	\$ (786,857)

Sensitivity of the Net OPEB Liability (Asset) to Changes in the Discount Rate

The following presents the net OPEB liability (asset) of the District if it were calculated using a discount rate that is one percentage point lower or one percentage point higher than the current rate, for measurement period ended June 30, 2022:

	1% Decrease (4.25%)	Current Discount Rate (5.25%)	1% Increase (6.25%)
Net OPEB Liability (Asset)	\$ (692,964)	\$ (786,857)	\$ (865,196)

Yuima Municipal Water District
Notes to Financial Statements
Year Ended June 30, 2023

8) POSTEMPLOYMENT BENEFITS OTHER THAN PENSIONS (OPEB) - Continued

Sensitivity of the Net OPEB Liability (Asset) to Changes in the Health Care Cost Trend Rates

The following presents the net OPEB liability (asset) of the District if it were calculated using health care cost trend rates that are one percentage point lower or one percentage point higher than the current rate, for measurement period ended June 30, 2022:

	1% Decrease ⁽¹⁾	Current Healthcare Cost Trend Rates ⁽²⁾	1% Increase ⁽³⁾
Net OPEB Liability (Asset)	\$ (874,175)	\$ (786,857)	\$ (682,216)

⁽¹⁾ Non-Medicare - 5.5% decreasing to an ultimate rate of 2.75% in 2076. Medicare - 4.65% decreasing to an ultimate rate of 2.75% in 2076.

⁽²⁾ Non-Medicare - 6.5% decreasing to an ultimate rate of 3.75% in 2076. Medicare - 5.65% decreasing to an ultimate rate of 3.75% in 2076.

⁽³⁾ Non-Medicare - 7.5% decreasing to an ultimate rate of 4.75% in 2076. Medicare - 6.65% decreasing to an ultimate rate of 4.75% in 2076.

OPEB Plan Fiduciary Net Position

CERBT issues a publicly available financial report that may be obtained from the California Public Employees Retirement System Executive Office, 400 P Street, Sacramento, California 95814.

Recognition of Deferred Outflows and Deferred Inflows of Resources

Gains and losses related to changes in total OPEB liability and fiduciary net position are recognized in OPEB expense systematically over time.

Amounts are first recognized in OPEB expense for the year the gain or loss occurs. The remaining amounts are categorized as deferred outflows and deferred inflows of resources related to OPEB and are to be recognized in future OPEB expense.

The recognition period differs depending on the source of the gain or loss:

Net difference between projected and actual earnings on OPEB plan investments	5 years
All other amounts	Expected average remaining service lifetime (EARSL)

Yuima Municipal Water District
Notes to Financial Statements
Year Ended June 30, 2023

8) POSTEMPLOYMENT BENEFITS OTHER THAN PENSIONS (OPEB) - Continued

OPEB Expense and Deferred Outflows/Inflows of Resources Related to OPEB

For the fiscal year ended June 30, 2023, the District recognized OPEB expense (credit) of \$(229,461). As of fiscal year ended June 30, 2023, the District reported deferred outflows/inflows of resources related to OPEB from the following services:

	Deferred Outflows of Resources	Deferred Inflows of Resources
OPEB contributions subsequent to measurement date	\$ 45,905	\$
Changes in assumptions		(22,385)
Differences between expected and actual experience		
Net differences between projected and actual earnings on OPEB plan investments	127,639	
Total	\$ 173,544	\$ (22,385)

The \$45,905 reported as deferred outflows of resources related to contributions subsequent to the June 30, 2022 measurement date will be recognized as a reduction of the net OPEB liability (asset) during the fiscal year ending June 30, 2024. Other amounts reported as deferred outflows of resources related to OPEB will be recognized as expense as follows:

Year Ended June 30,	Deferred Outflow/(Inflows) of Resources
2024	\$ (1,535)
2025	25,486
2026	28,009
2027	53,294

9) DEFERRED COMPENSATION PLAN

The District offers their employees a deferred compensation plan in accordance with Internal Revenue Code Section 457. The plan is under two investment group contracts, Valic and CalPERS, which offer a variety of variable rates. The plan permits employees to defer a portion of their salary until future retirement years. Eligibility to participate is after six months of service. The plan requires a minimum of \$25 per month to be allocated for each option preference. The maximum amount that may be deferred under this plan for the calendar year 2023 was \$22,500 per participant and is \$20,500 for the calendar year 2022; or up to 25% of gross compensation.

Yuima Municipal Water District
Notes to Financial Statements
Year Ended June 30, 2023

10) NET POSITION

Net Investment in Capital Assets

Land and Construction in Progress, Not Being Depreciated	\$	1,564,048
Capital Assets, Net of Depreciation		15,979,409
Less Capital Related Debt:		
2013 Installment Note		(550,217)
2019 Installment Note		(4,470,000)
		(4,470,000)
Total	\$	12,523,240

Restricted for OPEB

Net OPEB Asset	\$	786,857
Less Deferred Inflows of Resources for OPEB Related Items		(22,385)
		(22,385)
Total	\$	764,472

Designated Net Position

In addition to the regulatory restrictions imposed by state law, the Board of Directors by resolution allocated and designated unrestricted net position balances for the following purposes:

	Beginning of Year	Additions Transfers In	Dispositions Transfers Out	End of Year
Customer Rate Stabilization	\$ 3,583,749	\$	\$ 3,200,333	\$ 383,416
Minimum Operating Reserve	781,525	724,553		1,506,078
Continuing Capital Projects	1,524,472	80,380		1,604,852
	\$ 5,889,746	\$ 804,933	\$ 3,200,333	\$ 3,494,346
Total	\$ 5,889,746	\$ 804,933	\$ 3,200,333	\$ 3,494,346

Yuima Municipal Water District
Notes to Financial Statements
Year Ended June 30, 2023

11) RISK MANAGEMENT

The District is exposed to various risks of loss related to torts; theft of, damage to, and destruction of assets; errors and omissions; injuries to employees; and natural disasters.

The District is a member of Association of California Water Agencies Joint Powers Insurance Authority (JPIA). The JPIA is a risk-pooling self-insurance authority, created under provisions of California Government Code Sections 6500 et. seq. The purpose of JPIA is to arrange and administer programs of insurance for the pooling of self-insured losses and to purchase excess insurance coverage from commercial insurance carriers to reduce its exposure to large losses.

The District pays annual premiums for its liability (auto, general, and public officials), property loss, workers' compensation, and fidelity bond coverage. They are subject to retrospective adjustments based on claims experience. The nature and amounts of these adjustments cannot be estimated and are charged or credited to expense as invoiced. The District's insurance expense for year ended June 30, 2023 was \$44,059. There were no instances in the past three years where a settlement exceeded the District's coverage.

12) COMMITMENTS AND CONTINGENCIES

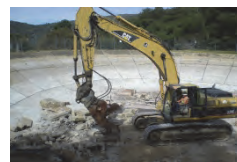
Legal

The District is involved with various potential litigation matters. In the opinion of management and legal counsel, the disposition of all litigation pending will not have a material effect on the financial condition of the District.

Economic Dependency

For fiscal year ended June 30, 2023, 68.77% of water sold by the District is purchased from the San Diego County Water Authority and 31.23% is produced or purchased from local groundwater sources. All electricity used by the District for pumping and operations is purchased from San Diego Gas and Electric.

This page was intentionally left blank



REQUIRED SUPPLEMENTARY INFORMATION

Yuima Municipal Water District
Schedule of the District's Proportionate Share of the Net Pension Liability
CalPERS Pension Plan
Last Ten Years⁽¹⁾
As of June 30, 2023

Fiscal Year	Proportion of the Net Pension Liability	Proportionate Share of the Net Pension Liability	Covered Payroll	Proportionate Share of the Net Pension Liability as a Percentage of Covered Payroll	Plan Fiduciary Net Position as a Percentage of the Total Pension Liability
2015	0.03407%	\$ 2,120,073	\$ 1,093,443	193.89%	70.93%
2016	0.07695%	\$ 2,111,093	\$ 1,101,073	191.73%	72.19%
2017	0.06785%	\$ 2,356,951	\$ 937,320	251.46%	70.38%
2018	0.06422%	\$ 2,531,736	\$ 889,697	284.56%	71.66%
2019	0.06042%	\$ 2,277,111	\$ 1,010,367	225.37%	76.68%
2020	0.05693%	\$ 2,279,573	\$ 1,070,567	212.93%	77.77%
2021	0.05386%	\$ 2,271,670	\$ 916,528	247.86%	79.16%
2022	0.03641%	\$ 691,440	\$ 682,029	101.38%	93.89%
2023	0.05292%	\$ 2,476,537	\$ 701,927	352.82%	79.09%

Notes to Schedule:

Benefit Changes. In 2023, there was no benefit terms modified.

Changes in Assumptions. In 2018, the discount rate reduced from 7.65% to 7.15%. In 2023, the discount rate reduced from 7.15% to 6.90%.

⁽¹⁾ Fiscal year 2015 was the 1st year of implementation. Future years' information will be displayed up to 10 years as information becomes available.

Yuima Municipal Water District
Schedule of Contributions
CalPERS Pension Plan
Last Ten Years⁽¹⁾
As of June 30, 2023

Fiscal Year	Contractually Required Contribution (Actuarially Determined)	Contributions in Relation to the Actuarially Determined Contribution	Contribution Deficiency (Excess)	Covered Payroll	Contributions as a Percentage of Covered Payroll
2015	\$ 378,037	\$ (378,037)	\$ 0	\$ 1,101,073	34.33%
2016	\$ 362,982	\$ (362,982)	\$ 0	\$ 937,320	38.73%
2017	\$ 386,160	\$ (386,160)	\$ 0	\$ 889,697	43.40%
2018	\$ 386,811	\$ (386,811)	\$ 0	\$ 1,010,367	38.28%
2019	\$ 425,145	\$ (425,145)	\$ 0	\$ 1,070,567	39.71%
2020	\$ 225,665	\$ (225,665)	\$ 0	\$ 916,528	24.62%
2021	\$ 532,793	\$ (532,793)	\$ 0	\$ 682,029	78.11%
2022	\$ 250,560	\$ (250,560)	\$ 0	\$ 701,927	35.70%
2023	\$ 281,427	\$ (281,427)	\$ 0	\$ 752,403	37.40%

⁽¹⁾ Fiscal year 2015 was the 1st year of implementation. Future years' information will be displayed up to 10 years as information becomes available.

Yuima Municipal Water District
Schedule of Changes in the Net OPEB Liability (Asset) and Related Ratios
For the Measurement Periods Ended June 30
As of June 30, 2023

Measurement Period	2017	2018	2019	2020	2021
Total OPEB Liability					
Service Cost	\$ 1,049	\$ 1,080	\$ 1,112	\$ 2,078	\$ 2,132
Interest on the Total OPEB Liability	64,078	64,757	64,980	50,583	49,126
Actual and Expected Experience Difference	0	0	(259,374)	0	(279,532)
Changes in Assumptions	0	0	(521)	(19,042)	29,103
Changes in Benefit Terms	0	0	0	0	0
Benefit Payments	(54,290)	(51,306)	(72,354)	(65,495)	(54,852)
Net Change in Total OPEB Liability	10,837	14,531	(266,157)	(31,876)	(254,023)
Total OPEB Liability - Beginning	1,191,152	1,201,989	1,216,520	950,363	918,487
Total OPEB Liability - Ending (a)	\$ 1,201,989	\$ 1,216,520	\$ 950,363	\$ 918,487	\$ 664,464
Plan Fiduciary Net Position					
Contributions - Employer	\$ 67,384	\$ 146,183	\$ 17,484	\$ 9,339	\$ 4,666
Net Investment Income	70,090	62,540	103,594	96,213	212,194
Benefit Payments	(54,290)	(51,306)	(72,354)	(65,495)	(54,852)
Administrative Expense	(654)	(2,439)	(315)	(754)	(551)
Net Change in Plan Fiduciary Net Position	82,530	154,978	48,409	39,303	161,457
Plan Fiduciary Net Position - Beginning	1,234,574	1,317,104	1,472,082	1,520,491	1,559,794
Plan Fiduciary Net Position -Ending (b)	\$ 1,317,104	\$ 1,472,082	\$ 1,520,491	\$ 1,559,794	\$ 1,721,251
Net OPEB Liability (Asset) - Ending (a)-(b)	\$ (115,115)	\$ (255,562)	\$ (570,128)	\$ (641,307)	\$ (1,056,787)
Plan Fiduciary Net Position as a Percentage of the Total OPEB Liability	109.6%	121.0%	160.0%	169.8%	259.0%
Covered Payroll	137,234	334,712	348,380	130,860	161,534
Net OPEB Liability as a Percentage of Covered Payroll	(83.9)%	(76.4)%	(163.7)%	(490.1)%	(654.2)%

Notes to Schedule:

⁽¹⁾ Historical information is required only for measurement periods for which GASB 75 is applicable. Future years' information will be displayed up to 10 years as information becomes available.

Yuima Municipal Water District
Schedule of Changes in the Net OPEB Liability (Asset) and Related Ratios - Continued
For the Measurement Periods Ended June 30
As of June 30, 2023

Measurement Period	<u>2022</u>
Total OPEB Liability	
Service Cost	\$ 1,515
Interest on the Total OPEB Liability	30,393
Actual and Expected Experience Difference	0
Changes in Assumptions	(44,771)
Changes in Benefit Terms	149,890
Benefit Payments	<u>(52,251)</u>
Net Change in Total OPEB Liability	84,776
Total OPEB Liability - Beginning	<u>664,464</u>
Total OPEB Liability - Ending (a)	<u>\$ 749,240</u>
Plan Fiduciary Net Position	
Contributions - Employer	\$ 52,251
Net Investment Income	(184,717)
Benefit Payments	(52,251)
Administrative Expense	<u>(437)</u>
Net Change in Plan Fiduciary	
Net Position	(185,154)
Plan Fiduciary Net Position -	
Beginning	<u>1,721,251</u>
Plan Fiduciary Net Position -Ending (b)	<u>\$ 1,536,097</u>
Net OPEB Liability (Asset) -	
Ending (a)-(b)	<u>\$ (786,857)</u>
Plan Fiduciary Net Position as a	
Percentage of the Total OPEB Liability	205%
Covered Payroll	163,345
Net OPEB Liability as a Percentage	
of Covered Payroll	(481.7)%

Yuima Municipal Water District
Schedule of Contributions
Retiree Health Benefit Plan
Last Ten Fiscal Years⁽¹⁾
As of June 30, 2023

Fiscal Year	Actuarially Determined Contribution (ADC)	Contributions in Relation to the ADC	Contribution Deficiency (Excess)	Covered Payroll	Contributions as a Percentage of Covered Payroll
2018	\$ 0	\$ (146,183)	\$ (146,183)	\$ 334,712	43.7%
2019	\$ 0	\$ (17,484)	\$ (17,484)	\$ 348,380	5.0%
2020	\$ 0	\$ (9,339)	\$ (9,339)	\$ 130,860	7.1%
2021	\$ 0	\$ (4,666)	\$ (4,666)	\$ 161,534	2.9%
2022	\$ 0	\$ (52,251)	\$ (52,251)	\$ 163,345	32.0%
2023	\$ 0	\$ (45,905)	\$ (45,905)	\$ 174,844	26.3%

Notes to Schedule:

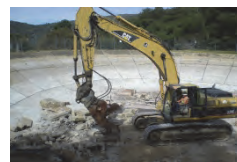
The actuarial methods and assumptions used to set the actuarially determined contributions for Fiscal Year 2023 were from the June 30, 2021 actuarial valuation. Currently, there are no actuarially determined contributions required since the District has a net OPEB asset.

Methods and assumptions used to determine contributions:

Actuarial Cost Method	Entry Age Normal, Level Percentage of Payroll
Amortization Method/Period	Level Percent of Pay over a 30 Year Period
Asset Valuation Method	Market Value of Assets
Discount Rate	4.75%
Investment Rate of Return	4.75%
General Inflation	2.50%
Medical Trend	Non-Medicare - 6.5% for 2023, decreasing to an ultimate rate of 3.75% in 2076. Medicare - 5.65% for 2023, decreasing to an ultimate rate of 3.75% in 2076.
Mortality	CalPERS 1997-2015 Experience Study
Mortality Improvement	Mortality projected fully generational with Scale MP-2021

⁽¹⁾ Historical information is required only for measurement periods for which GASB 75 is applicable. Future years' information will be displayed up to 10 years as information become available.

This page was intentionally left blank



Statistical Section



Annual Comprehensive Financial Report

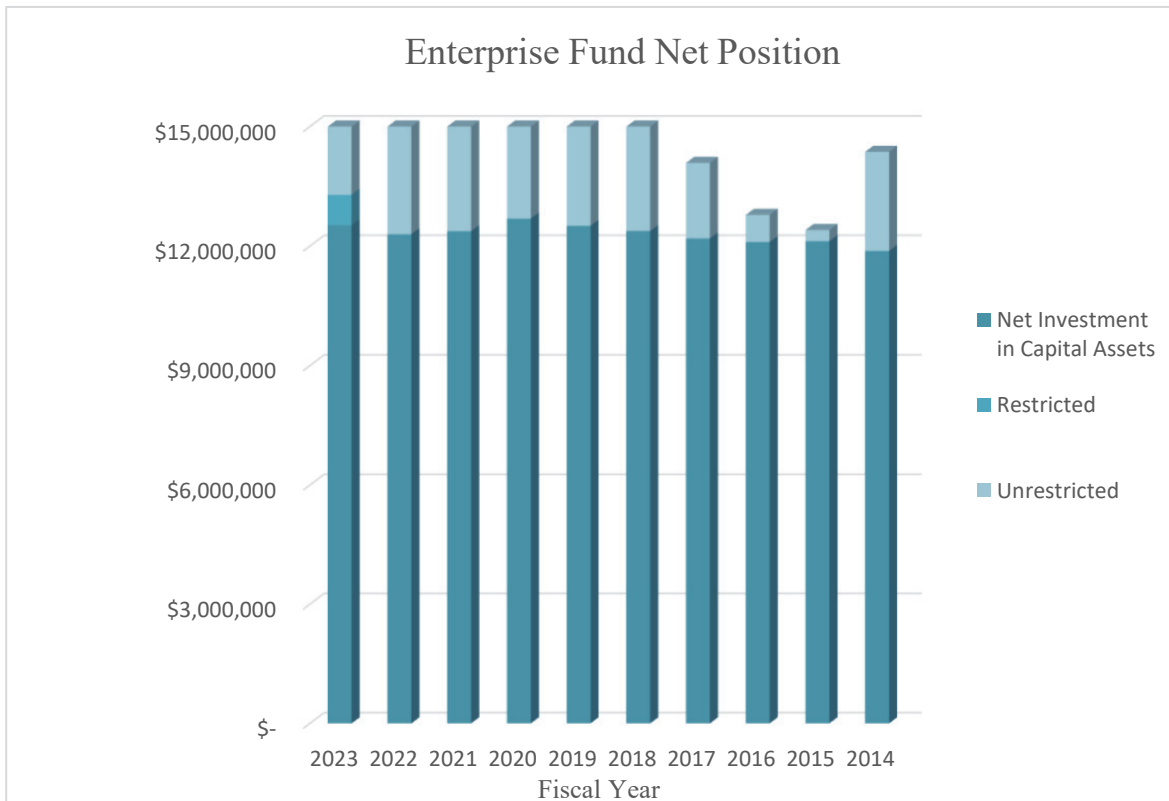
STATISTICAL SECTION

This part of the Yuima Municipal Water District annual comprehensive financial report presents detailed information as a context for understanding what the information in the financial statements, note disclosures, and required supplementary information says about the District's overall financial health.

CONTENTS	PAGES
Financial Trends These schedules contain trend information to help the reader understand how the District's financial performance and well-being have changed over time.	50 - 59
Revenue Capacity These schedules contain information to help the reader assess the District's most significant local revenue source, water sales.	60 - 65
Debt Capacity These schedules present information to help the reader assess the affordability of the District's current levels of outstanding debt and the District's ability to issue additional debt in the future.	66 - 69
Demographic and Economic Information These schedules offer demographic and economic indicators to help the reader understand the environment within which the District's financial activities take place.	70 - 73
Operating Information These schedules contain service and infrastructure data to help the reader understand how the information in the District's financial report relates to the services the District provides and the activities it performs.	74 - 77

**Yuima Municipal Water District
Net Position by Component - Enterprise Fund
Last Ten Fiscal Years**

Fiscal Year	Net Investment in Capital Assets	Restricted	Unrestricted	Total Net Position
2023	\$ 12,523,240	\$ 764,472	\$ 3,494,346	\$ 16,782,058
2022	12,296,940	-	5,889,747	18,186,687
2021	12,372,668	-	5,112,242	17,484,910
2020	12,690,506	-	4,224,815	16,915,321
2019	12,508,865	-	3,657,822	16,166,687
2018	12,376,977	-	3,488,751	15,865,728
2017	12,192,571	-	1,896,073	14,088,644
2016	12,100,947	-	681,845	12,782,792
2015	12,120,332	-	283,989	12,404,321
2014	11,878,249	-	2,488,978	14,367,227



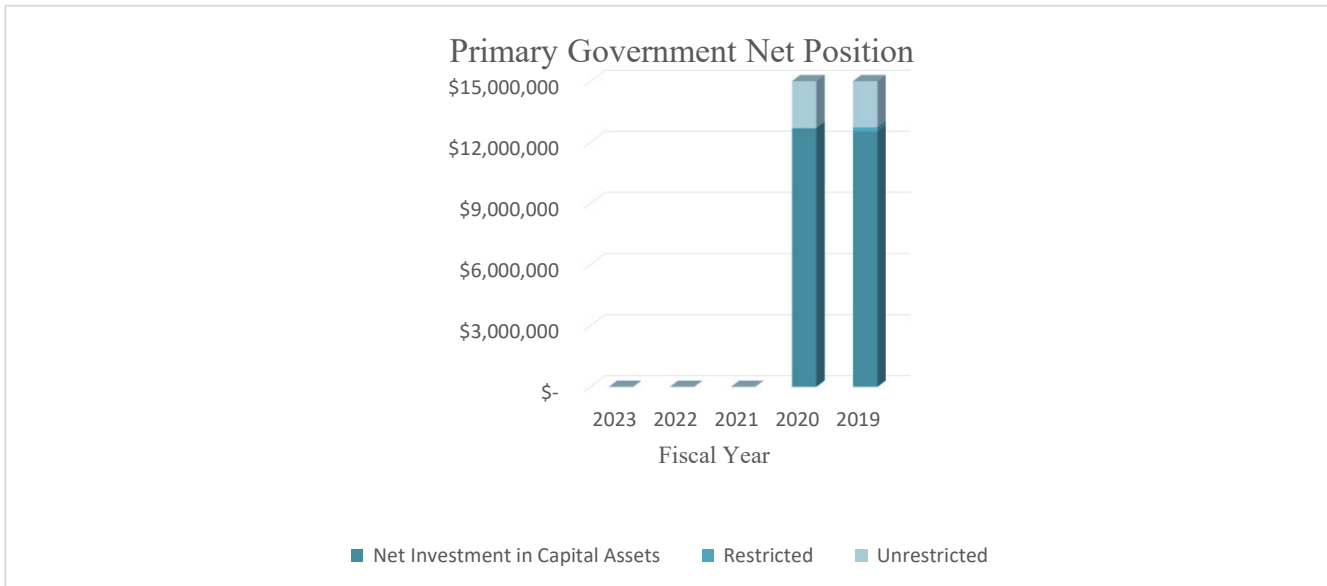
Source: Yuima Municipal Water District

Notes: The District's assets consist primarily of water treatment and distribution facilities.

Yuima Municipal Water District
Net Position by Component - Government-wide Financial Statements
Last Ten Fiscal Years

Page 1 of 2

	Fiscal Year ⁽¹⁾				
	2023	2022	2021	2020	2019
Governmental Activities:					
Net Investment in Capital Assets	\$ -	\$ -	\$ -	\$ -	\$ -
Restricted	-	-	-	-	223,553
Unrestricted	-	-	-	-	-
Total Governmental Activities Net Position	\$ -	\$ -	\$ -	\$ -	\$ 223,553
Business-type Activities					
Net Investment in Capital Assets	\$ -	\$ -	\$ -	\$ 12,690,506	\$ 12,508,865
Restricted	-	-	-	-	-
Unrestricted	-	-	-	4,224,815	3,657,822
Total Business-type Activities Net Position	\$ -	\$ -	\$ -	\$ 16,915,321	\$ 16,166,687
Primary Government					
Net Investment in Capital Assets	\$ -	\$ -	\$ -	\$ 12,690,506	\$ 12,508,865
Restricted	-	-	-	-	223,553
Unrestricted	-	-	-	4,224,815	3,657,822
Total Primary Government Net Position	\$ -	\$ -	\$ -	\$ 16,915,321	\$ 16,390,240



Source: Yuima Municipal Water District

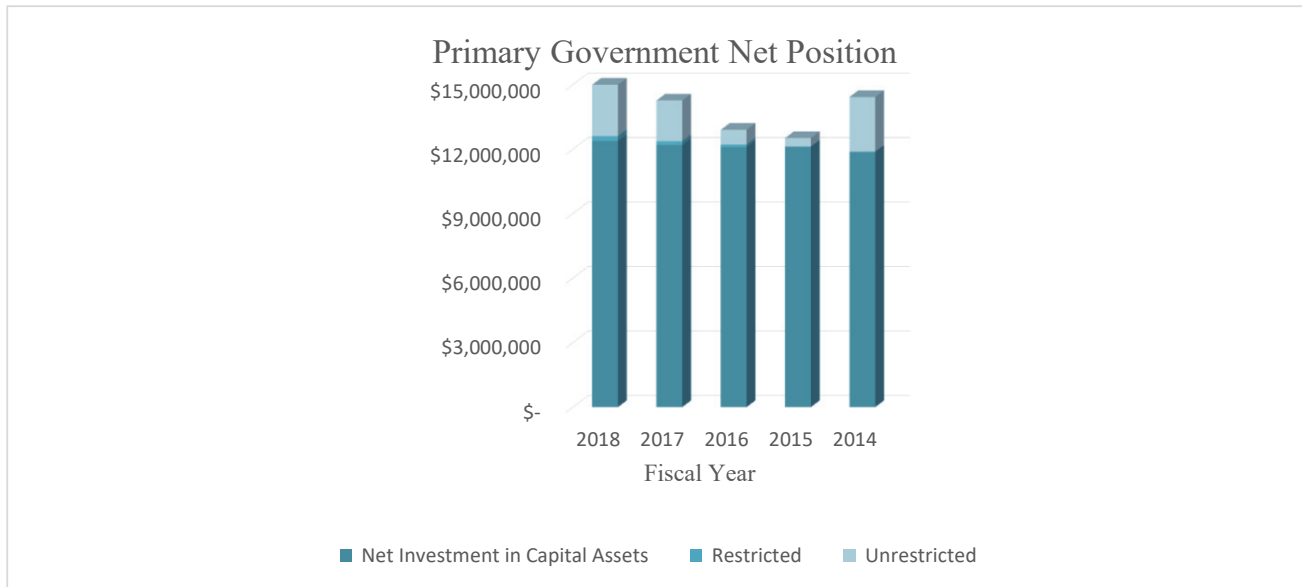
Notes: (1) In fiscal year 2020, the fire services were transferred to the County of San Diego which was the only governmental activities for the District. Starting in fiscal year 2021, no government-wide financial statements are presented since the District has only business-type activities.

(2) The District's assets consist primarily of water treatment and distribution facilities.

Yuima Municipal Water District
NetPosition by Component - Government-wide Financial Statements
Last Ten Fiscal Years

Page 2 of 2

	Fiscal Year ⁽¹⁾				
	2018	2017	2016	2015	2014
Governmental Activities:					
Net Investment in Capital Assets	\$ -	\$ -	\$ -	\$ -	\$ -
Restricted	227,290	177,620	120,050	-	-
Unrestricted	-	-	-	115,483	60,942
Total Governmental Activities Net Position	\$ 227,290	\$ 177,620	\$ 120,050	\$ 115,483	\$ 60,942
Business - type Activities					
Net Investment in Capital Assets	\$ 12,376,977	\$ 12,192,571	\$ 12,100,947	\$ 12,120,332	\$ 11,878,249
Restricted	-	-	-	-	-
Unrestricted	3,488,751	1,896,073	681,845	283,989	2,488,978
Total Business-type Activities Net Position	\$ 15,865,728	\$ 14,088,644	\$ 12,782,792	\$ 12,404,321	\$ 14,367,227
Primary government					
Net Investment in Capital Assets	\$ 12,376,977	\$ 12,192,571	\$ 12,100,947	\$ 12,120,332	\$ 11,878,249
Restricted	227,290	177,620	120,050	-	-
Unrestricted	3,488,751	1,896,073	681,845	399,472	2,549,920
Total Primary Government Net Position	\$ 16,093,018	\$ 14,266,264	\$ 12,902,842	\$ 12,519,804	\$ 14,428,169



Source: Yuima Municipal Water District

Notes: (1) In fiscal year 2020, the fire services were transferred to the County of San Diego which was the only governmental activities for the District. Starting in fiscal year 2021, no government-wide financial statements are presented since the District has only business-type activities.

(2) The District's assets consist primarily of water treatment and distribution facilities.

Yuima Municipal Water District
Changes in Net Position - Enterprise Fund
Last Ten Fiscal Years

<u>Fiscal Year</u>	<u>Operating Revenues</u>	<u>Operating Expenses</u>	<u>Operating Income (Loss)</u>	<u>Total Non-Operating Revenues (Expenses)</u>	<u>Income (Loss) Before Capital Contributions</u>	<u>Capital Contributions</u>	<u>Transfers In</u>	<u>Changes in Net Position</u>
2023	\$ 12,445,900	\$ 14,653,726	\$ (2,207,826)	\$ 785,836	\$ (1,421,990)	\$ 17,361	\$ -	\$ (1,404,629)
2022	16,054,868	16,145,397	(90,529)	792,306	701,777	-	-	701,777
2021	16,738,755	16,613,210	125,545	444,044	569,589	-	-	569,589
2020	14,103,426	14,241,081	(137,655)	839,191	701,536	30,992	16,106	748,634
2019	12,821,344	13,450,306	(628,962)	847,677	218,715	82,244	-	300,959
2018	16,771,256	16,574,067	197,189	1,285,979	1,483,168	177,837	-	1,661,005
2017	11,745,266	11,489,021	256,245	1,049,607	1,305,852	-	-	1,305,852
2016	9,670,633	9,845,811	(175,178)	553,649	378,471	-	-	378,471
2015	10,885,303	11,515,045	(629,742)	754,141	124,399	-	-	124,399
2014	10,924,679	12,683,076	(1,758,397)	409,224	(1,349,173)	-	-	(1,349,173)

Source: Yuima Municipal Water District

Notes: The District's assets consist primarily of water treatment and distribution facilities.

Yuima Municipal Water District
Changes in Net Position - Government-wide Financial Statements
Last Ten Fiscal Years

Page 1 of 2

	Fiscal Year				
	2023⁽¹⁾	2022⁽¹⁾	2021⁽¹⁾	2020	2019
Expenses					
Governmental Activities:					
Fire Protection	\$ -	\$ -	\$ -	\$ 229,098	\$ 63,764
Total Governmental Activities Expenses	<u>-</u>	<u>-</u>	<u>-</u>	<u>229,098</u>	<u>63,764</u>
Business-type activities:					
Water Activities	-	-	-	14,383,514	13,502,605
Interest on Long-term Debt	-	-	-	-	-
Total Business-type Activities Expenses	<u>-</u>	<u>-</u>	<u>-</u>	<u>14,383,514</u>	<u>13,502,605</u>
Total Primary Government Expenses	<u>\$ -</u>	<u>\$ -</u>	<u>\$ -</u>	<u>\$ 14,612,612</u>	<u>\$ 13,566,369</u>
Program Revenues					
Governmental Activities:					
Charges for Services - Fire Protection	\$ -	\$ -	\$ -	\$ 14,490	\$ 53,131
Operating Grants & Contributions - Fire Protection	-	-	-	7,142	6,816
Capital Grants and Contributions - Fire Protection	-	-	-	-	-
Total Governmental Activities Program Revenues	<u>-</u>	<u>-</u>	<u>-</u>	<u>21,632</u>	<u>59,947</u>
Business-type Activities:					
Charges for Services - Water Activities	-	-	-	14,420,981	13,075,490
Operating Grants & Contributions - Water Activities	-	-	-	-	-
Capital Grants & Contributions - Water Activities	-	-	-	30,992	82,244
Total Business-type Activities Program Revenues	<u>-</u>	<u>-</u>	<u>-</u>	<u>14,451,973</u>	<u>13,157,734</u>
Total Primary Government Program Revenues	<u>\$ -</u>	<u>\$ -</u>	<u>\$ -</u>	<u>\$ 14,473,605</u>	<u>\$ 13,217,681</u>
Net (Expense)/Revenue					
Governmental Activities	\$ -	\$ -	\$ -	\$ (207,466)	\$ (3,817)
Business-type Activities	-	-	-	68,459	(344,871)
Total Primary Government Net (Expense)/Revenue	<u>\$ -</u>	<u>\$ -</u>	<u>\$ -</u>	<u>\$ (139,007)</u>	<u>\$ (348,688)</u>
General Revenues and Other					
Changes in Net Position					
Governmental Activities:					
Property Taxes	\$ -	\$ -	\$ -	\$ -	\$ -
Investment Income	-	-	-	19	80
Other	-	-	-	(16,106)	-
Total Governmental Activities	<u>-</u>	<u>-</u>	<u>-</u>	<u>(16,087)</u>	<u>80</u>
Business-type Activities:					
Property Taxes	-	-	-	460,536	447,498
Investment Income	-	-	-	194,582	140,140
Other	-	-	-	8,951	58,192
Special Item	-	-	-	16,106	-
Total Business-type Activities	<u>-</u>	<u>-</u>	<u>-</u>	<u>680,175</u>	<u>645,830</u>
Total Primary Government	<u>\$ -</u>	<u>\$ -</u>	<u>\$ -</u>	<u>\$ 664,088</u>	<u>\$ 645,910</u>
Change in Net Position					
Governmental Activities	\$ -	\$ -	\$ -	\$ (223,553)	\$ (3,737)
Business-type Activities	-	-	-	748,634	300,959
Total Primary Government	<u>\$ -</u>	<u>\$ -</u>	<u>\$ -</u>	<u>\$ 525,081</u>	<u>\$ 297,222</u>

Source: Yuima Municipal Water District

Notes: (1) In fiscal year 2020, the fire services were transferred to the County of San Diego which was the only governmental activities for the District. Starting in fiscal year 2021, no government-wide financial statements are presented since the District has only business-type activities.

Yuima Municipal Water District
Changes in Net Position - Government-wide Financial Statements
Last Ten Fiscal Years
Page 2 of 2

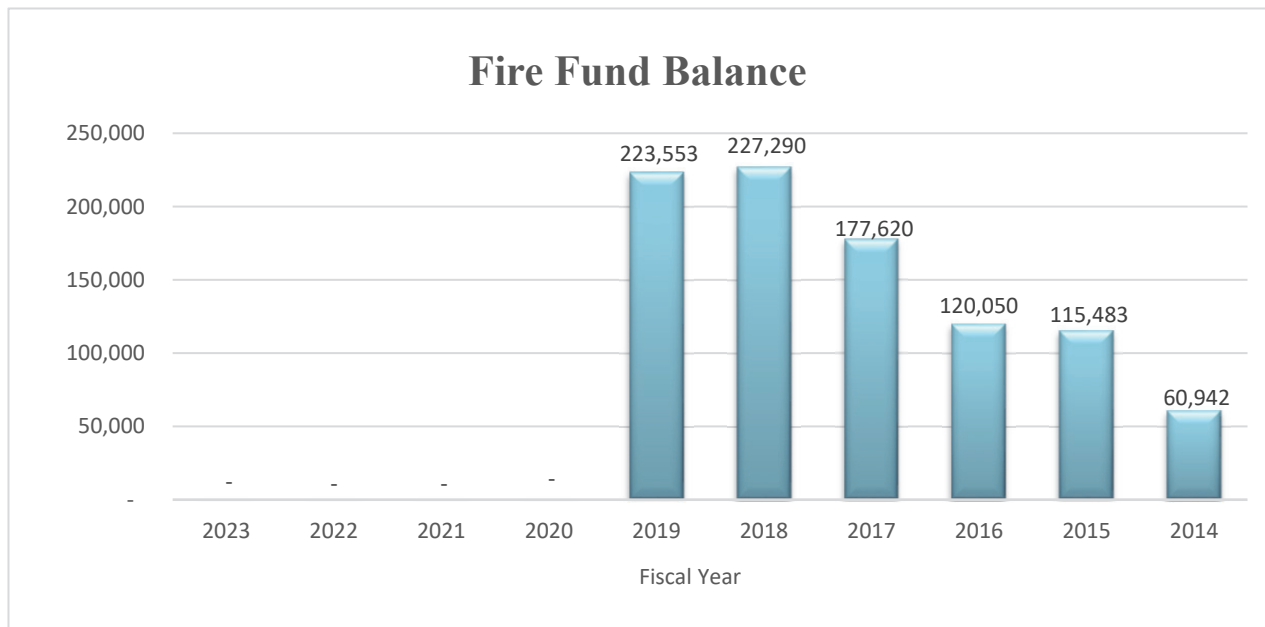
	Fiscal Year				
	2018	2017	2016	2015	2014
Expenses					
Governmental Activities:					
Fire Protection	\$ 21,057	\$ 288	\$ 117,154	\$ 81,806	\$ 5,486
Total Governmental Activities Expenses	<u>21,057</u>	<u>288</u>	<u>117,154</u>	<u>81,806</u>	<u>5,486</u>
Business-type activities:					
Water Activities	16,643,497	11,559,426	9,992,584	11,625,791	12,972,013
Interest on Long-term Debt	-	-	-	-	-
Total Business-type Activities Expenses	<u>16,643,497</u>	<u>11,559,426</u>	<u>9,992,584</u>	<u>11,625,791</u>	<u>12,972,013</u>
Total Primary Government Expenses	<u>\$ 16,664,554</u>	<u>\$ 11,559,714</u>	<u>\$ 10,109,738</u>	<u>\$ 11,707,597</u>	<u>\$ 12,977,499</u>
Program Revenues					
Governmental Activities:					
Charges for Services	\$ 64,260	\$ 52,512	\$ 59,165	\$ 56,838	\$ 55,052
Operating Grants and Contributions	6,421	5,316	62,537	79,495	1,650
Capital Grants and Contributions	-	-	-	-	-
Total Governmental Activities Program Revenues	<u>70,681</u>	<u>57,828</u>	<u>121,702</u>	<u>136,333</u>	<u>56,702</u>
Business-type Activities:					
Charges for Services	17,520,725	12,408,319	9,928,163	11,260,495	11,177,486
Operating Grants and Contributions	-	-	-	-	-
Capital Grants and Contributions	177,837	-	-	-	-
Total Business-type Activities Program Revenues	<u>17,698,562</u>	<u>12,408,319</u>	<u>9,928,163</u>	<u>11,260,495</u>	<u>11,177,486</u>
Total Primary Government Program Revenues	<u>\$ 17,769,243</u>	<u>\$ 12,466,147</u>	<u>\$ 10,049,865</u>	<u>\$ 11,396,828</u>	<u>\$ 11,234,188</u>
Net (Expense)/Revenue					
Governmental Activities	\$ 49,624	\$ 57,540	\$ 4,548	\$ 54,527	\$ 51,216
Business-type Activities	1,055,065	848,893	(64,421)	(365,296)	(1,794,527)
Total Primary Government Net (Expense)/Revenue	<u>\$ 1,104,689</u>	<u>\$ 906,433</u>	<u>\$ (59,873)</u>	<u>\$ (310,769)</u>	<u>\$ (1,743,311)</u>
General Revenues and Other					
Changes in Net Assets					
Governmental Activities:					
Property Taxes	\$ -	\$ -	\$ -	\$ -	\$ -
Investment Income	46	30	19	14	11
Other	-	-	-	-	8,203
Total Governmental Activities	<u>46</u>	<u>30</u>	<u>19</u>	<u>14</u>	<u>8,214</u>
Business-type Activities:					
Property Taxes	429,867	416,525	390,735	396,037	378,146
Investment Income	51,431	29,495	22,222	22,582	34,020
Other	124,642	10,939	29,935	71,076	33,188
Special Item	-	-	-	-	-
Total Business-type Activities	<u>605,940</u>	<u>456,959</u>	<u>442,892</u>	<u>489,695</u>	<u>445,354</u>
Total Primary Government	<u>\$ 605,986</u>	<u>\$ 456,989</u>	<u>\$ 442,911</u>	<u>\$ 489,709</u>	<u>\$ 453,568</u>
Change in Net Position					
Governmental Activities	\$ 49,670	\$ 57,570	\$ 4,567	\$ 54,541	\$ 59,430
Business-type Activities	1,661,005	1,305,852	378,471	124,399	(1,349,173)
Total Primary Government	<u>\$ 1,710,675</u>	<u>\$ 1,363,422</u>	<u>\$ 383,038</u>	<u>\$ 178,940</u>	<u>\$ (1,289,743)</u>

Source: Yuima Municipal Water District

Notes: (1) In fiscal year 2020, the fire services were transferred to the County of San Diego which was the only governmental activities for the District. Starting in fiscal year 2021, no government-wide financial statements are presented since the District has only business-type activities.

**Yuima Municipal Water District
Fund Balances of Governmental Funds
Last Ten Years**

Fiscal Year Ended	GOVERNMENTAL FUNDS			Total Unassigned Balance	Total Restricted Balance
	General ⁽¹⁾ Fund	Fire ⁽³⁾ Fund	Total Balance		
2023	\$ -	\$ -	\$ -	\$ -	\$ -
2022	-	-	-	-	-
2021	-	-	-	-	-
2020	-	-	-	-	-
2019	-	223,553	223,553	-	223,553
2018	-	227,290	227,290	-	227,290
2017	-	177,620	177,620	-	177,620
2016	-	120,050	120,050	-	120,050
2015	-	115,483	115,483	-	115,483
2014	-	60,942	60,942	-	60,942



Source: Yuima Municipal Water District

Notes: (1) The District does not have a governmental type general fund.

(2) The Fire Mitigation Fee project consisted of building a Fire Apparatus Bay at the Cal Fire CDF location. The project was completed at a total cost of \$268,000. It was funded as a joint project with Yuima, Pauma, and Mootamai Municipal Water Districts.

(3) The Fire Protection District (Fire Fund) was consolidated with the County of San Diego's Fire Protection CSA 135, all financial responsibility, net assets and fund balances were transferred to the County in fiscal year 2020.

Yuima Municipal Water District
Changes in Fund Balances of Governmental Fund
Last Ten Fiscal Years

Page 1 of 2

	Fiscal Year				
	2023⁽¹⁾	2022⁽¹⁾	2021⁽¹⁾	2020⁽¹⁾	2019
Revenues					
Fire Protection Special Tax	\$ -	\$ -	\$ -	\$ 11,730	\$ 51,306
Mitigation Fees	-	-	-	2,760	1,825
Contributions	-	-	-	-	-
Investment Earnings	-	-	-	19	80
Miscellaneous (EMS Funds)	-	-	-	7,142	6,816
Total Revenues	<u>-</u>	<u>-</u>	<u>-</u>	<u>21,651</u>	<u>60,027</u>
Expenditures					
General and Administrative	-	-	-	180,456	706
Capital Expenditures	-	-	-	-	-
Fire Protection	-	-	-	48,642	63,058
Total Expenditures	<u>-</u>	<u>-</u>	<u>-</u>	<u>229,098</u>	<u>63,764</u>
Net Change in Fund Balances	<u>\$ -</u>	<u>\$ -</u>	<u>\$ -</u>	<u>\$ (207,447)</u>	<u>\$ (3,737)</u>

Source: ACFR - Statement of Revenues, Expenditures and Changes in Fund Balance - Government Funds

- Notes:
- (1) In the 2019-20 Fiscal Year the Fire District Consolidated with the County of San Diego for fire protection. The Special Fire tax was transferred to the County in addition to the remaining balance of the Fire Fund.
 - (2) CalFire did not call a "Non-Fire Season" in Fiscal Year 2017-18, therefore no fire contract charges were incurred during this reporting period.
 - (3) Although Cal Fire called a regular fire season during the 2016-17 Fiscal Year, the State of California chose 10 Cal Fire Stations to fund during the non-fire season. The District's Cal Fire Station was one of the ten chosen. Therefore, no fire contract charges or contributions were incurred during this reporting period.
 - (4) CalFire called an early fire season in the 2015-16 Fiscal Year. This resulted in a reduced amount for the fire contract charges that were incurred during this reporting period.

Yuima Municipal Water District
Changes in Fund Balances of Governmental Fund
Last Ten Fiscal Years

Page 2 of 2

	Fiscal Year				
	2018	2017	2016	2015	2014
Revenues					
Fire Protection Special Tax	\$ 52,663	\$ 51,073	\$ 51,564	\$ 54,663	\$ 50,715
Mitigation Fees	11,597	1,439	7,601	2,175	4,337
Contributions	-	-	55,844	72,000	1,650
Investment Earnings	46	30	19	14	11
Miscellaneous (EMS Funds)	6,421	5,316	6,693	7,495	8,203
Total Revenues	<u>70,727</u>	<u>57,858</u>	<u>121,721</u>	<u>136,347</u>	<u>64,917</u>
Expenditures					
General and Administrative	250	288	4,567	3,567	3,835
Capital Expenditures	-	-	-	-	-
Fire Protection	20,807	-	112,587	78,239	1,651
Total Expenditures	<u>21,057</u>	<u>288</u>	<u>117,154</u>	<u>81,806</u>	<u>5,486</u>
Net Change in Fund Balances	<u>\$ 49,670</u>	<u>\$ 57,570</u>	<u>\$ 4,567</u>	<u>\$ 54,541</u>	<u>\$ 59,430</u>

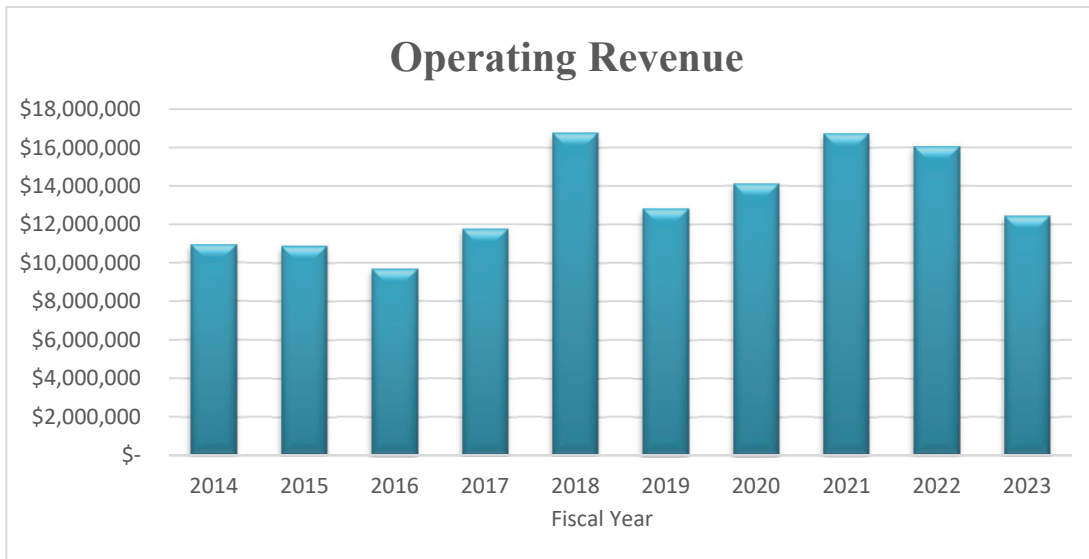
Source: ACFR - Statement of Revenues, Expenditures and Changes in Fund Balance - Government Funds

Notes: The Fire Fund has no related debt, therefore no debt expenditures or ratio is presented.

- (5) CalFire did not call a "Non-Fire Season in Fiscal Year 2014-15, therefore no fire contract charges were incurred during this reporting period.

Yuima Municipal Water District Operating Revenues by Source Last Ten Fiscal Years

Fiscal Year Ended	Water Sales & Pumping Charges	Other Services	Total Operating Revenues	Percent Change
2023	\$ 11,575,405	\$ 870,495	\$ 12,445,900	-25.6%
2022	15,274,237	780,631	16,054,868	13.8%
2021	15,847,820	890,935	16,738,755	18.7%
2020	13,269,823	833,603	14,103,426	10.0%
2019	11,991,270	830,074	12,821,344	-23.6%
2018	15,918,051	853,205	16,771,256	42.8%
2017	11,025,249	720,017	11,745,266	21.5%
2016	8,981,074	689,559	9,670,633	-11.2%
2015	10,272,594	612,709	10,885,303	-0.4%
2014	10,356,950	567,729	10,924,679	33.3%



Source: Yuima Municipal Water District

Notes: (1) Ground Water figures include production in IDA past the master meter and well agreements.

**Yuima Municipal Water District
Commodity Charges and Base Charges
Last Ten Fiscal Years**

Commodity Charges

Fiscal Year Ended	Agricultural Water Rate (per acre foot)		Domestic Water Rate (per acre foot)		Average Annual Increase	Pumping Charge			Average Annual Increase
	Yuima	IDA	Yuima	IDA		Yuima	IDA (Range)		
	2023	\$ 1,641	\$ 1,112	\$ 1,641		\$ 1,551	5%	\$ 103	
2022	\$ 1,420	\$ 1,077	\$ 1,851	\$ 1,380	7%	\$ 103	\$ 74	\$ 355	0%
2021	\$ 1,420	\$ 1,077	\$ 1,851	\$ 1,077	0%	\$ 103	\$ 74	\$ 355	0%
2020	\$ 1,420	\$ 1,077	\$ 1,851	\$ 1,077	2%	\$ 103	\$ 74	\$ 355	0%
2019	\$ 1,388	\$ 1,052	\$ 1,809	\$ 1,052	0%	\$ 103	\$ 74	\$ 355	6%
2018 ^{2,3}	\$ 1,388	\$ 1,052	\$ 1,809	\$ 1,052	3%	\$ 99	\$ 70	\$ 338	1%
2017 ^{3,4}	\$ 1,316	\$ 1,052	\$ 1,715	\$ 1,052	18%	\$ 96	\$ 70	\$ 338	0%
2016 ⁴	\$ 1,225	\$ 867	\$ 1,401	\$ 867	1%	\$ 96	\$ 70	\$ 338	0%
2015 ⁵	\$ 1,203	\$ 867	\$ 1,358	\$ 867	13%	\$ 96	\$ 70	\$ 338	0%
2015	\$ 1,046	\$ 777	\$ 1,202	\$ 777	7%	\$ 96	\$ 70	\$ 338	0%
2014	\$ 978	\$ 727	\$ 1,123	\$ 727	4%	\$ 96	\$ 70	\$ 338	5%

Base Charges

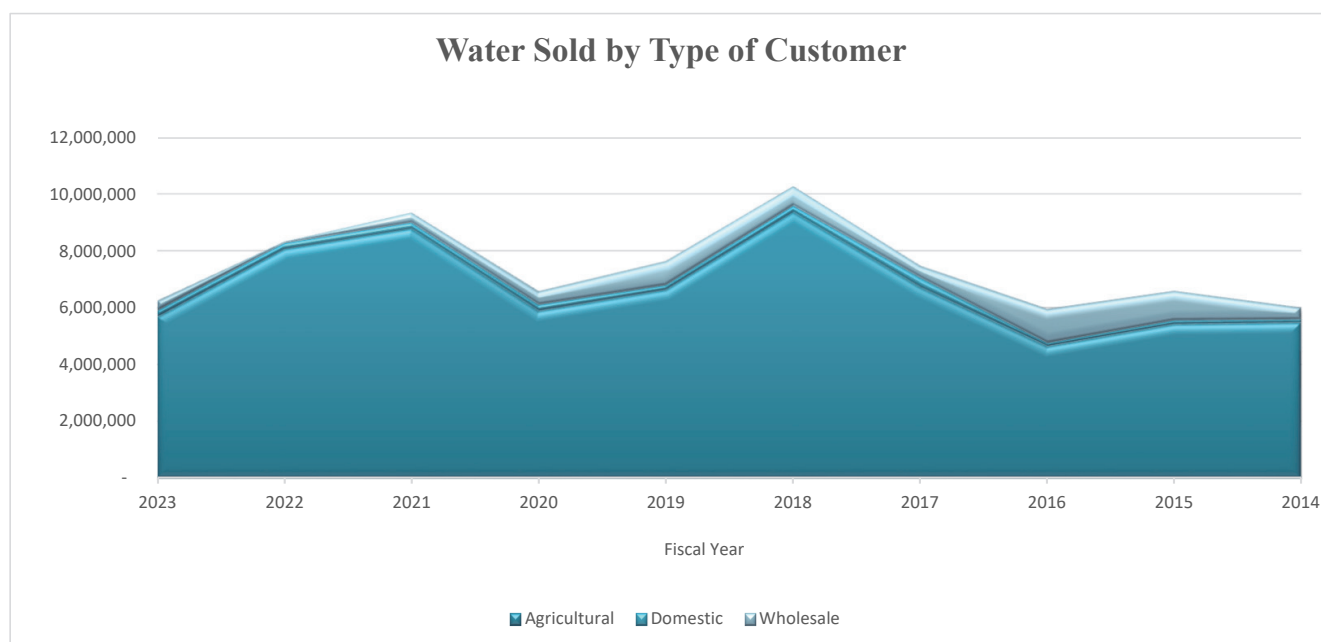
Fiscal Year Ended	Monthly Meter Charge by Meter Size									Average Annual Increase
	5/8"	1"	1¼" & 1½"	2"	3"	4"	5"	6"	8"	
2023	\$ 37	\$ 59	\$ 111	\$ 192	\$ 354	\$ 604	\$ 855	\$ 1,105	\$ 1,915	0%
2022	\$ 37	\$ 59	\$ 111	\$ 192	\$ 354	\$ 604	\$ 855	\$ 1,105	\$ 1,915	0%
2021	\$ 37	\$ 59	\$ 111	\$ 192	\$ 354	\$ 604	\$ 855	\$ 1,105	\$ 1,915	0%
2020	\$ 37	\$ 59	\$ 111	\$ 192	\$ 354	\$ 604	\$ 855	\$ 1,105	\$ 1,915	0%
2019	\$ 37	\$ 59	\$ 111	\$ 192	\$ 354	\$ 604	\$ 855	\$ 1,105	\$ 1,915	0%
2018 ²	\$ 37	\$ 59	\$ 111	\$ 192	\$ 354	\$ 604	\$ 855	\$ 1,105	\$ 1,915	15%
2017	\$ 32	\$ 51	\$ 96	\$ 167	\$ 307	\$ 525	\$ 743	\$ 961	\$ 1,665	-9%
2016	\$ 35	\$ 56	\$ 106	\$ 183	\$ 338	\$ 578	\$ 817	\$ 1,057	\$ 1,831	15%
2015	\$ 31	\$ 49	\$ 92	\$ 159	\$ 294	\$ 502	\$ 711	\$ 919	\$ 1,593	7%
2014	\$ 29	\$ 46	\$ 86	\$ 149	\$ 275	\$ 469	\$ 664	\$ 859	\$ 1,488	0%

Source: Yuima Municipal Water District

- Notes:
- (1) Effective July 1, 2018, the Board approved a 5% increase to the pump zone charge
 - (2) Effective July 1, 2017, the Board approved an increase between 5.5% and 7.1% to the base water rate and a 15% increase to the monthly meter fee.
 - (3) Effective January 1, 2017, the Board approved an increase between .07% and 18% in the base water rate and
 - (4) Effective July 1, 2016, the Board approved an increase of .02% and .03% increase in the base water rate while
 - (5) Effective July 1, 2015, the Board approved an increase between 1.57% and 3.16% in the base water rate and 15% the monthly meter fee.
 - (6) Effective January 1, 2015, the Board approved a 13-15% increase in the base water rate.

Yuima Municipal Water District Water Sold by Type of Customer Last Ten Fiscal Years

Fiscal Year Ended	Yuima and IDA Combined								Total Rainfall ⁽³⁾ (inches)	Average District Rate ⁽⁴⁾
	Agricultural		Domestic		Wholesale Ag/Dom		Total Water Sales ⁽¹⁾⁽²⁾			
	Value	Acre Feet	Value	Acre Feet	Value	Acre Feet	Value	Acre Feet		
2023	\$ 5,668,355	4,978	\$ 209,915	132	\$ 341,996	102	\$ 6,220,266	5,212	21.24	\$ 1,193
2022	\$ 8,049,132	6,990	\$ 214,149	152	\$ 34,168	19	\$ 8,297,449	7,161	10.38	\$ 1,159
2021	8,775,608	7,485	216,449	161	333,918	234	9,325,974	7,880	5.71	1,183
2020	5,879,057	6,272	213,780	150	460,226	305	6,553,063	6,727	19.32	974
2019	6,620,209	5,656	167,250	123	827,956	562	7,615,415	6,341	19.76	1,201
2018	9,361,474	7,256	219,987	166	671,274	1,398	10,252,735	8,819	7.06	1,163
2017	6,700,996	5,370	337,513	184	415,410	824	7,453,919	6,379	22.04	1,169
2016	4,637,000	5,079	102,646	107	1,196,111	701	5,935,757	5,888	15.00	1,008
2015	5,410,989	6,167	125,426	131	1,033,256	877	6,569,670	7,176	12.75	916
2014	5,468,903	6,704	109,031	163	406,854	724	5,984,789	7,591	7.26	788



Source: Yuima Municipal Water District

Notes: (1) Yuima's primary and only significant revenue source is retail water sales. The proportion of customer type that makes up the revenue base has remained relatively unchanged for the time frame presented. Agricultural and Wholesale water customers make up the largest section of the revenue base. Consequently, demand peaks sharply during dry years when irrigation requirements are greatest and drops during wet years. As a result in fiscal years of higher rainfall a corresponding dip in Total Acre Feet Sold can be seen.

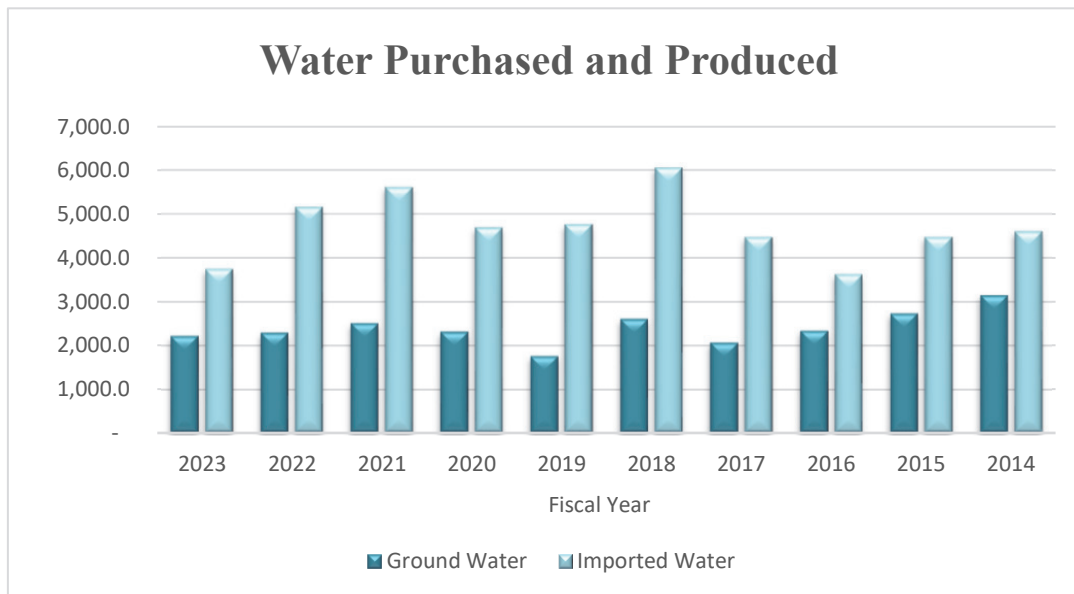
(2) Although revenue by customer type is not presented separately on the face of the financial statements, these revenues are recorded separately in the District's general ledger for tracking purposes.

(3) Rainfall is measured by a rain gauge located at the Yuima Municipal Water District's office that was installed and is maintained by the San Diego County Flood Control District.

(4) Calculated average rates. See page 65 for actual rates.

Yuima Municipal Water District Water Purchased and Produced Last Ten Fiscal Years

Fiscal Year Ended	Yuima & IDA Combined (Acre Feet)			Percent Ground Water	Percent Imported Water
	Ground Water ⁽¹⁾	Imported Water	Total Water Produced		
2023	2,212.0	3,742.7	5,954.7	37%	63%
2022	2,287.7	5,151.2	7,438.9	31%	69%
2021	2,508.5	5,610.9	8,119.4	31%	69%
2020	2,311.4	4,684.7	6,996.1	33%	67%
2019	1,751.9	4,756.2	6,508.1	27%	73%
2018	2,601.5	6,053.5	8,655.0	30%	70%
2017	2,058.1	4,470.6	6,528.7	32%	68%
2016	2,334.3	3,621.1	5,955.4	39%	61%
2015	2,726.6	4,468.4	7,195.0	38%	62%
2014	3,145.7	4,596.1	7,741.8	41%	59%



Source: Yuima Municipal Water District

Notes: (1) Ground Water figures include production in IDA past the master meter and well agreements.

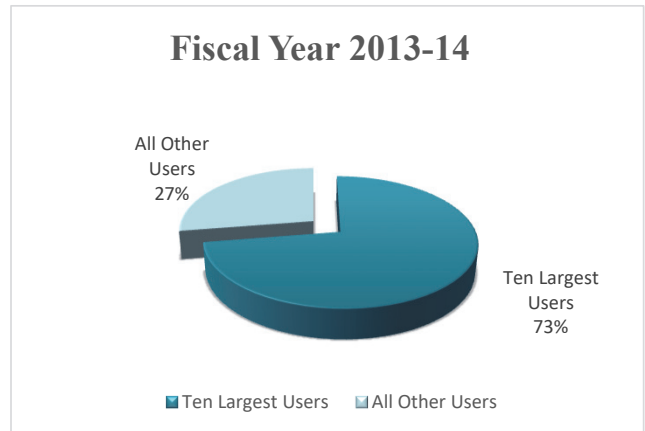
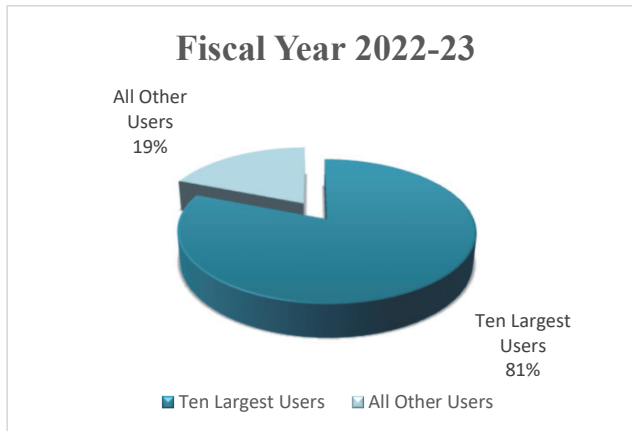
Yuima Municipal Water District Principal Water Consumers For the Fiscal Years 2023 and 2014

Yuima & IDA Customer Accounts FISCAL YEAR ENDED 2023

Customer Name ⁽¹⁾	Usage in Acre Feet	Percent of Water Sold
Pauma Mtn. Ranch/Pauma Ranches	1,952	37.44%
T-Y Nursery	670	12.85%
Jackson Ranches	426	8.17%
Rancho Eugenio	289	5.54%
Humason	206	3.95%
Valencia Groves	186	3.57%
House	136	2.61%
Pauma Ridge	132	2.53%
Serrato	120	2.30%
Brothers Nursery	103	1.98%
Total Top Ten Consumers	4,220	80.95%
Other Consumers	993	19.05%
Total Water Billed	5,213	100.00%

Yuima & IDA Customer Accounts FISCAL YEAR ENDED 2014

Customer Name ⁽¹⁾	Usage in Acre Feet	Percent of Water Sold
Pauma Mtn. Ranch/Pauma Ranches	2,390	31.49%
Rancho Eugenio	523	6.89%
Val Vista	506	6.67%
Pauma Ridge	382	5.03%
Humason	315	4.15%
Rincon Oaks	315	4.15%
T-Y Nursery	300	3.95%
House	284	3.74%
Burge	257	3.39%
PKB Farms	232	3.06%
Total Top Ten Consumers	5,504	72.52%
Other Consumers	2,086	27.48%
Total Water Billed	7,590	100.00%



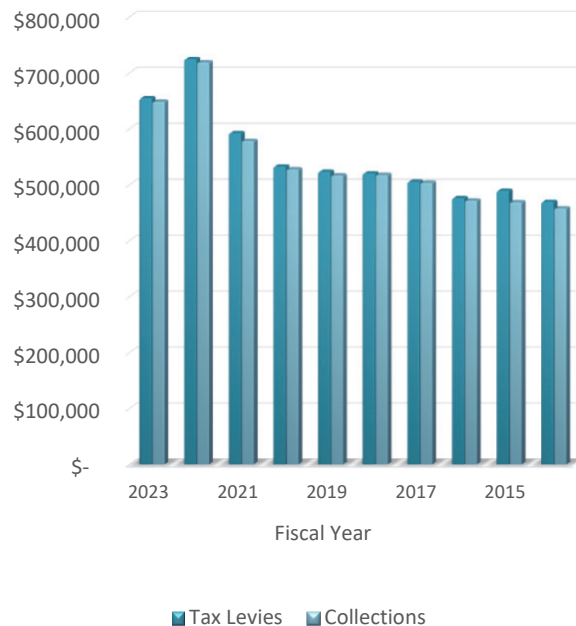
Source: Yuima Municipal Water District

Notes: (1) The District's service area has been established for many years, and with a relatively stable local economy has seen few changes to the customer base. This stability is reflected in the similarities between the current list of the largest water customers and the list from ten years ago.

Yuima Municipal Water District Property Tax and Assessment Levies Last Ten Years

Fiscal Year Ended	Yuima & IDA Combined					
	CURRENT YEAR LEVY			Total Collections Thru 6/30	Net Uncollected at 6/30	Percent Uncollected at 6/30
	Property Taxes ⁽¹⁾	Special Assessments ⁽²⁾	Total Levy			
2023	\$ 542,562	\$ 112,157	\$ 654,719	\$ 648,563	\$ 6,155	0.95%
2022	520,267	204,395	724,662	719,075	5,587	0.78%
2021	494,136	98,070	592,206	578,586	13,620	2.35%
2020	458,615	74,163	532,778	527,620	5,158	0.98%
2019	446,790	76,447	523,237	516,716	6,520	1.26%
2018	441,678	78,755	520,433	517,635	2,798	0.54%
2017	427,851	77,471	505,322	503,593	1,729	0.34%
2016	402,372	73,786	476,158	471,898	4,260	0.90%
2015	407,230	82,145	489,375	468,903	20,472	4.37%
2014	390,181	79,287	469,468	458,072	11,396	2.49%

Property Tax Levies and Collections

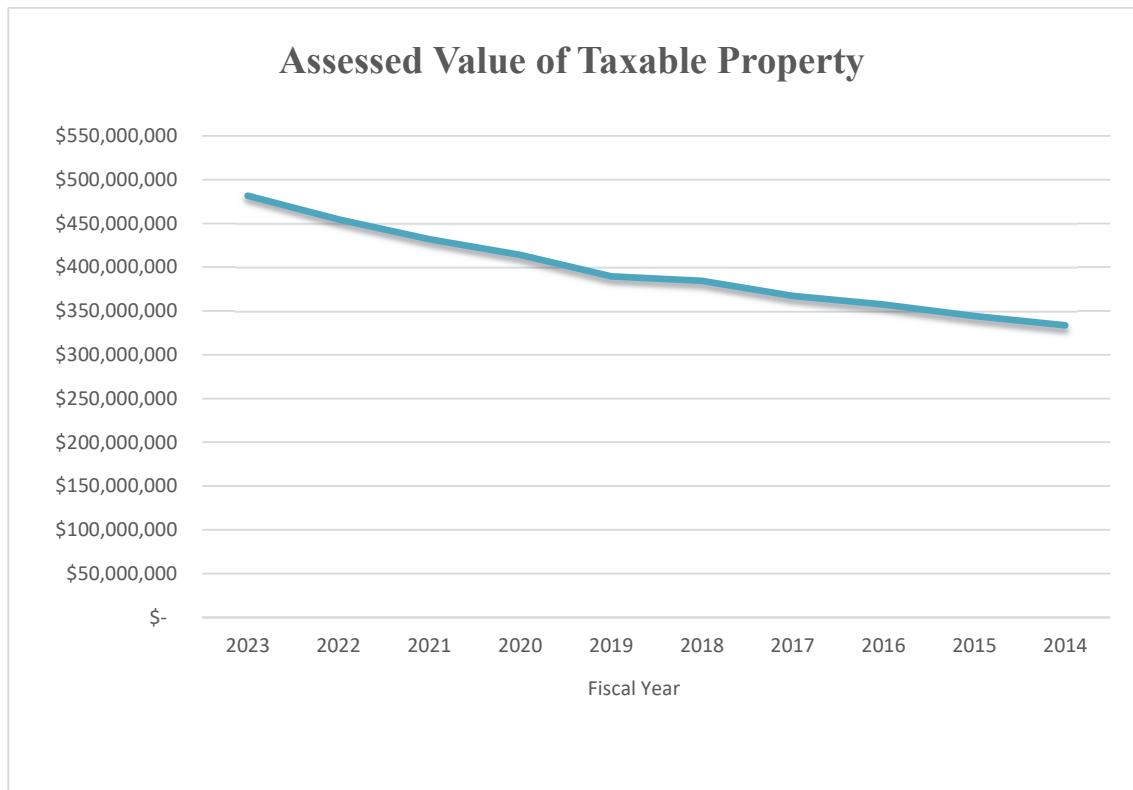


Source: Yuima Municipal Water District and the Office of the Auditor Controller, County of San Diego

- Notes:
- (1) Property taxes represent a portion of the county 1% general tax rate.
 - (2) Special Assessments represent \$10 per acre water availability charge assessed on all taxable acreage in the District not otherwise deferred.

Yuima Municipal Water District Assessed Value of Taxable Property Last Ten Years

Yuima & IDA Combined					
Fiscal Year Ended	SECURED			Total Assessed Secured Value	Tax Rate ⁽¹⁾
	Real Property	Personal Property	Exemptions		
2023	\$ 491,130,160	\$ -	\$ (9,401,610)	\$ 481,728,550	-
2022	464,112,157	-	(9,437,305)	454,674,852	-
2021	441,500,741	-	(9,652,581)	431,848,160	-
2020	422,514,046	-	(8,417,486)	414,096,560	-
2019	396,415,578	-	(6,880,024)	389,535,554	-
2018	391,453,828	-	(6,997,093)	384,456,735	-
2017	373,794,032	-	(6,722,617)	367,071,415	-
2016	363,633,935	-	(6,392,428)	357,241,507	-
2015	350,573,903	-	(6,342,541)	344,231,362	-
2014	339,012,925	-	(5,447,031)	333,565,894	-

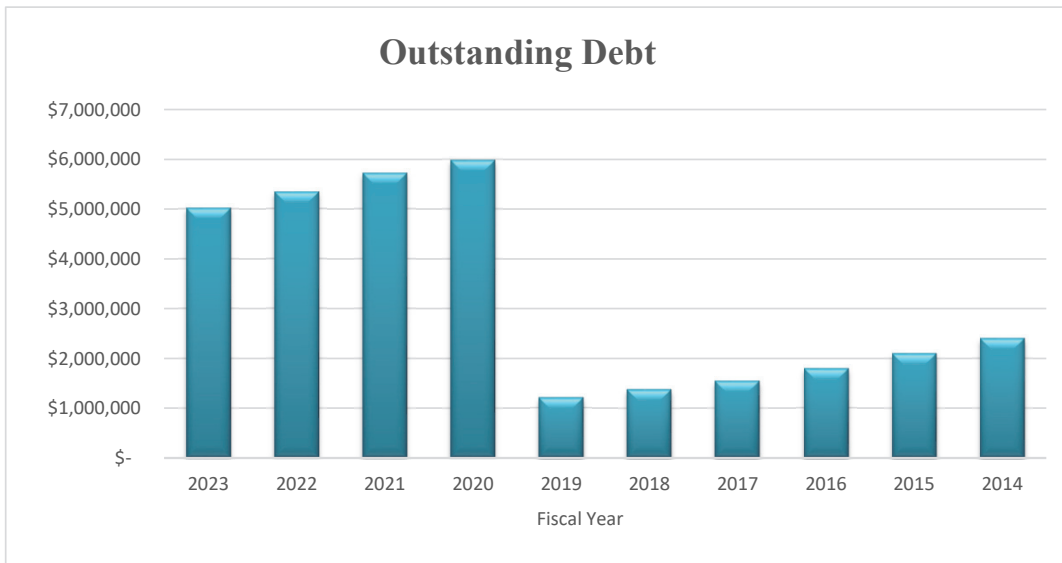


Source: Yuima Municipal Water District and the Office of the Auditor Controller, County of San Diego

Notes: (1) The District does not assess a tax rate. However, the District receives its proportionate share of property taxes levied by the County of San Diego in accordance with Proposition 13.

**Yuima Municipal Water District
Ratios of Outstanding Debt by Type
Last Ten Fiscal Years**

Fiscal Year Ended	General Obligation Bonds ⁽¹⁾	Revenue Bonds ⁽²⁾	Term Loans	Total	Number of Meters ⁽³⁾	Debt per Meter	Percentage		Debt per Capita
							of Personal Income ⁽⁴⁾	Population ⁽⁵⁾	
2023	\$ -	\$ -	\$ 5,020,217	\$ 5,020,217	346	\$ 14,509	3%	2,660	1,887
2022	-	-	5,341,540	5,341,540	346	15,438	3%	2,660	2,008
2021	-	-	5,722,662	5,722,662	346	16,539	3%	2,660	2,151
2020	-	-	5,984,115	5,984,115	346	17,295	3%	1,336	4,479
2019	-	-	1,208,032	1,208,032	341	3,543	1%	1,336	904
2018	-	-	1,379,800	1,379,800	330	4,181	1%	1,336	1,033
2017	-	-	1,547,945	1,547,945	333	4,648	1%	1,336	1,159
2016	-	-	1,788,086	1,788,086	334	5,354	1%	1,336	1,338
2015	-	-	2,097,698	2,097,698	334	6,281	1%	1,336	1,570
2014	-	-	2,401,589	2,401,589	334	7,190	2%	1,336	1,798



Source: Yuima Municipal Water District

- Notes: (1) The District has not issued any General Obligation Bonds to date.
(2) The District has not issued any Revenue Bonds to date.
(3) Yuima Meters = 113; IDA Meters =233
(4) See San Diego County Demographic and Economic Statistics Schedule. Personal Income for San Diego County was used since information for the District is unavailable.
(5) Population data provided by the 2020 U.S. Census Bureau.

**Yuima Municipal Water District
Revenue Debt Coverage
Last Ten Fiscal Years**

Page 1 of 2

Yuima & IDA Combined

Fiscal Year Ended	Operating Revenues	Nonoperating Revenues	Gross Revenues⁽¹⁾	Less: Operating Expenses⁽²⁾	Net Revenue Available for Debt Service
2023	\$ 12,445,900	\$ 948,396	\$ 13,394,296	\$ 13,987,450	\$ (593,154)
2022	16,054,868	959,046	17,013,914	15,486,296.00	1,527,618
2021	16,738,755	1,018,915	17,757,670	15,960,805.00	1,796,865
2020	14,103,426	957,197	15,060,623	13,686,321	1,374,302
2019	12,821,344	899,976	13,721,320	12,899,095	822,225
2018	16,771,256	1,355,409	18,126,665	16,024,877	2,101,788
2017	11,745,266	1,120,009	12,865,275	10,942,559	1,922,716
2016	9,670,633	700,422	10,371,055	9,288,141	1,082,914
2015	10,885,303	864,887	11,750,190	10,959,302	790,888
2014 ⁽⁴⁾	10,924,679	698,161	11,622,840	12,151,833	(528,993)

Source: Yuima Municipal Water District

- Notes:
- (1) Computation excludes fire fund revenues.
 - (2) The transactions to record depreciation expense are not included in Total Expenses.
 - (3) Includes Municipal Finance Corporation Loans. See Note 6 to the financial statements.
 - (4) Principal & Interest figures in 2014 are shown net of refinance.
 - (5) 2014 Principal & Interest correction

**Yuima Municipal Water District
Revenue Debt Coverage
Last Ten Fiscal Years**

Page 2 of 2

Yuima & IDA Combined					
DEBT SERVICE REQUIREMENTS					Pledged Revenue Debt Limit
Principal	Interest	Total⁽⁴⁾	Coverage Factor		
\$ 321,323	\$ 144,739	\$ 466,062	-127%	115%	
381,122	155,265	536,386	285%	115%	
261,453	163,990	425,443	422%	115%	
156,917	60,279	217,196	633%	115%	
152,510	39,933	192,443	427%	115%	
148,230	44,213	192,443	1092%	115%	
220,226	49,266	269,492	713%	115%	
289,697	56,843	346,541	312%	115%	
282,317	64,224	346,540	228%	115%	
183,766 ⁽⁵⁾	59,179	242,945	-218%	115%	

Source: Yuima Municipal Water District

Notes:

- (1) Computation excludes fire fund revenues.
- (2) The transactions to record depreciation expense are not included in Total Expenses.
- (3) Includes Municipal Finance Corporation Loans. See Note 6 to the financial statements.
- (4) Principal & Interest figures in 2014 are shown net of refinance.
- (5) 2014 Principal & Interest correction.

**Yuima Municipal Water District
Computation of Direct and Overlapping Debt
June 30, 2023**

2022-23 Assessed Valuation: \$ 470,897,503

	Total Debt 6/30/2023	% Applicable ⁽¹⁾	District's Share of 6/30/2023
<u>DIRECT AND OVERLAPPING TAX AND ASSESSMENT DEBT:</u>			
Metropolitan Water District	19,215,000	0.013%	\$ 2,498
Palomar Community College District	641,965,146	0.312%	\$ 2,002,931
Palomar Pomerado Hospital District	400,167,282	0.457%	\$ 1,828,764
Yuima Municipal Water District	0	100.00%	0
TOTAL DIRECT AND OVERLAPPING TAX AND ASSESSMENT DEBT			\$ 3,834,193
 <u>OVERLAPPING GENERAL FUND DEBT</u>			
San Diego County General Fund Obligations	229,680,000	0.072%	\$ 165,370
San Diego County Pension Obligations	277,990,000	0.072%	\$ 200,153
San Diego County Superintendent of Schools Certificates of Participation	6,935,000	0.072%	\$ 4,993
Palomar Community College District General Fund Obligation	1,310,000	0.312%	\$ 4,087
TOTAL OVERLAPPING GENERAL FUND DEBT			\$ 374,603
 Yuima Municipal Water District Notes Payable	 5,020,217	 100.00%	 \$ 5,020,217
TOTAL DIRECT DEBT			\$ 5,020,217
TOTAL DIRECT AND OVERLAPPING GENERAL FUND DEBT			\$ 5,394,820
Less: Yuima Municipal Water District Notes Payable (100% self-supporting)			\$ (5,020,217)
TOTAL NET DIRECT AND OVERLAPPING GENERAL FUND DEBT			\$ 374,603
 COMBINED TOTAL DEBT			 \$ 4,208,795 ⁽²⁾

(1) The percentage of overlapping debt applicable to the district is estimated using taxable assessed property value. Applicable percentages were estimated by determining the portion of the overlapping district's assessed property value that is within the boundaries of the district divided by the overlapping district's total taxable assessed value.

(2) Excludes tax and revenue anticipation notes, enterprise revenue, mortgage revenue, notes payable and non-bonded capital lease obligations.

Ratios to Assessed Valuation:

Direct Debt	0.00%
Total Direct and Overlapping Tax and Assessment Debt	0.81%
Combined Total Debt	0.89%

Source: California Municipal Statistics, Inc.

Yuima Municipal Water District
San Diego County Demographic and Economic Statistics ⁽¹⁾
Last Ten Fiscal Years

Year	Population	Personal Income (in thousands)	Per Capita		Unemployment Rate
			Personal Income (in dollars)	School Enrollment	
2023 ⁽²⁾	N/A	N/A	N/A	N/A	3.9%
2022	3,270,767	167,801,000	51,045	481,102	3.2%
2021	3,315,404	164,786,000	49,703	490,068	7.0%
2020	3,343,355	173,279,000	51,828	502,785	13.8%
2019	3,351,786	191,558,000	57,151	506,260	3.3%
2018	3,337,456	194,633,000	58,318	508,169	3.7%
2017	3,316,192	192,107,000	57,930	505,310	4.3%
2016	3,288,612	186,900,000	56,832	504,561	5.0%
2015	3,227,496	179,800,000	55,709	503,848	5.0%
2014	3,194,362	170,300,000	53,313	503,096	6.4%

Source: County of San Diego, Annual Comprehensive Financial Report for the Year Ended June 30, 2022

Notes: (1) San Diego County, while not an exact representation of the District, is used to obtain the Demographic and Economic data shown above. There is no exact data available for the Pauma Valley area.

(2) Data for Fiscal Year 2023 not available at time of publication.

**Yuima Municipal Water District
San Diego County Employment by Industry⁽¹⁾
Fiscal Year 2023 and 2014**

	2023		2014	
	Employment at June 2023	% of Total Employment	Employment at June 2014	% of Total Employment
Agriculture	9,400	1%	10,500	1%
Natural Resources & Mining	400	0%	400	0%
Construction	89,300	6%	67,300	5%
Manufacturing	116,500	7%	96,600	7%
Wholesale Trade	42,800	3%	4,700	0%
Retail Trade	144,500	9%	140,700	11%
Warehousing & Utilities	44,000	3%	27,400	2%
Information	21,400	1%	24,200	2%
Finance Activities	78,100	5%	71,200	5%
Professional & Business Services	283,800	18%	227,900	17%
Educational & Health Services	244,500	15%	183,100	14%
Leisure & Hospitality	210,600	13%	177,400	13%
Repair, Religious, Professional	37,000	2%	51,400	4%
Federal Government	48,100	3%	45,700	3%
State Government	57,700	4%	43,200	3%
Local Government	150,100	10%	146,900	11%
Total, All Industries	1,578,200	100%	1,318,600	100%
Civilian Employment	1,528,200	96.0%	1,492,300	92.6%
Civilian Unemployment	63,400	4.0%	118,900	7.4%
Total Civilian Labor Force	1,591,600	100%	1,611,200	100%

Civilian Unemployment Rate

3.9%

7.4%

Source: California Employment Development Department

Notes: (1) San Diego County, while not an exact representation of the District, is used to obtain the employment profile data shown above. There is no exact data available for the Pauma Valley area.

**Yuima Municipal Water District
San Diego County Principal Employers⁽¹⁾
Current Year and Nine Years Ago**

	2022 ⁽²⁾			2013		
	Employees	Rank	Percentage of Total County Employment	Employees	Rank	Percentage of Total County Employment
University of California - San Diego	35,802	1	2.36%	27,832	2	1.87%
Sharp Healthcare	19,468	2	1.28%	15,960	4	1.07%
County of San Diego	17,954	3	1.18%	16,011	3	1.07%
City of San Diego	11,820	4	0.78%	10,306	7	0.69%
General Atomics	6,745	5	0.44%	7,668	9	0.51%
San Diego State University	6,454	6	0.43%	N/A	N/A	N/A
Rady Children's Hospital - San Diego	5,711	7	0.38%	N/A	N/A	N/A
San Diego Community College District	5,400	8	0.36%	N/A	N/A	N/A
Sempra Energy	5,063	9	0.33%	N/A	N/A	N/A
YMCA of San Diego County	5,057	10	0.33%	N/A	N/A	N/A
Total	119,474		7.87%	77,777		5.21%

Source: County of San Diego, Annual Comprehensive Financial Report

Notes: (1) San Diego County, while not an exact representation of the District, is used to obtain the employment profile data shown above. There is no exact data available for the Pauma Valley area. However, the casinos, container nurseries, and schools are the largest employers in our area.

(2) Data for fiscal year 2023 not available at time of publication

**Yuima Municipal Water District
District Employees and Operational Information⁽¹⁾
Last Ten Fiscal Years**

Full-time Equivalent District Employees

Fiscal Year Ended	Management	Field Operations	Administrative Services	Total Employees⁽²⁾	Average Years of Service
2023	3	4	1	8	13.75
2022	3	4	1.8	8.8	11.90
2021	1	4	2.8	7.8	12.25
2020	1	5	3.8	9.8	9.40
2019	2	5	3.8	10.8	10.00
2018	2	5	5	12	9.20
2017	2	5	3	10	10.10
2016	1	4	3	8	14.80
2015	3	4	2	9	12.70
2014	3	4	2	9	15.40

Operational Information

Water System - Yuima & IDA Combined

Service Area	13,491 acres
Miles of Water Main	44.12 miles
Number of Ag Only Open Reservoirs	2
Number of Treated Water Tanks	10
Total Treated Storage Capacity	58.0 ac.ft.
Number of Booster Pump Stations	9
Booster Station Total Connected Horsepower	5,550hp
Number of Producing Wells	23
Daily Production Peak ⁽³⁾	8.87 mgd
Average Daily Production ⁽⁴⁾	4.2 mgd
Number of Service Connections	347

Source: Yuima Municipal Water District

Notes: (1) Yuima is an established water district which is reflected in the relatively small changes in employees over this ten year period.

(2) The employee count represents the number of full-time employees in each department.

(3) Daily production peak is based on imported and local water supplies for the fiscal year.

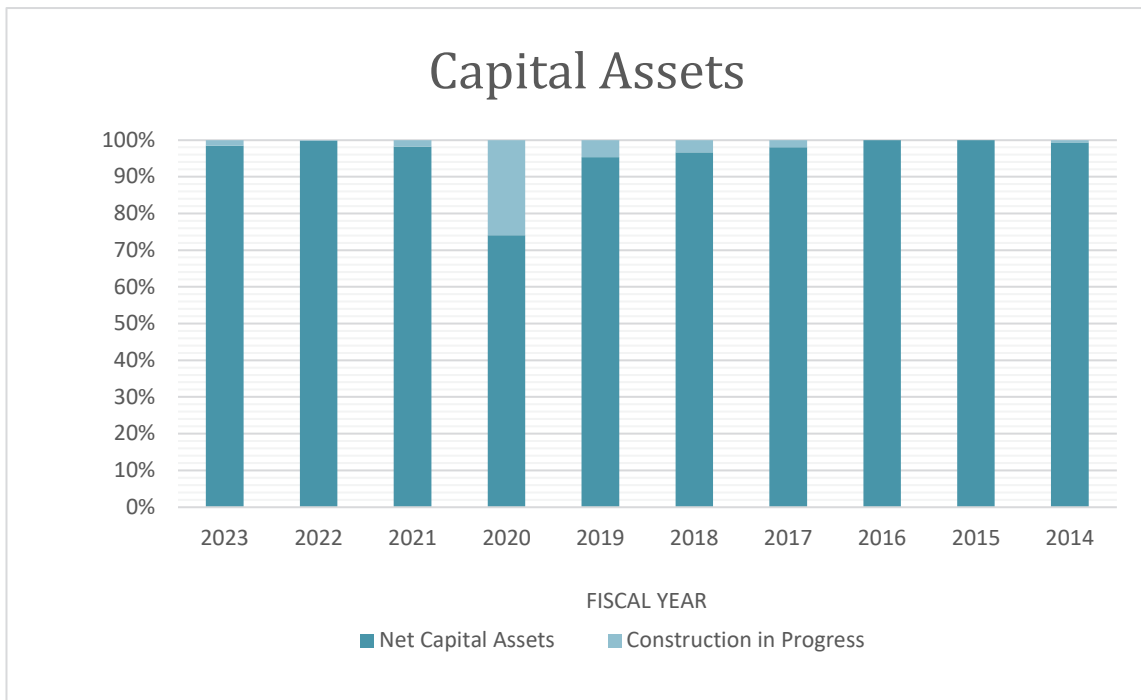
(4) Average daily production is based on imported and local water supplies for the fiscal year.

Yuima Municipal Water District Capital Assets Last Ten Years

Page 1 of 2

Yuima & IDA Combined

Fiscal Year Ended	Annexation Fees	Land	Source of Supply	Pumping Plant	Water Treatment Plant
2023	\$ 944,872	\$ 356,585	\$ 8,846,123	\$ 9,274,073	\$ 199,226
2022	944,872	356,585	8,846,123	9,250,260	199,266
2021	944,872	356,585	8,846,123	9,228,868	199,226
2020	944,872	356,585	9,032,537	3,837,537	199,226
2019	944,872	356,585	9,032,537	3,655,939	199,226
2018	944,872	356,585	9,032,538	3,587,888	199,226
2017	944,872	356,585	9,025,684	3,535,095	199,226
2016	944,872	356,585	9,025,684	3,557,628	199,226
2015	944,872	356,585	8,997,463	3,529,009	147,719
2014	944,872	355,835	8,679,135	3,487,527	144,272



Source: Yuima Municipal Water District

**Yuima Municipal Water District
Capital Assets
Last Ten Years**

Page 2 of 2

Yuima & IDA Combined

Fiscal Year Ended	Transmission & Distribution	General Plant	Accumulated Depreciation	Net Capital Assets	Construction in Progress
2023	\$ 8,919,274	\$ 2,575,412	\$ (13,834,699)	\$ 17,280,866	\$ 262,591
2022	8,919,274	2,327,678	(13,237,648)	17,606,409	38,711
2021	8,591,483	2,224,830	(12,595,496)	17,796,491	325,354
2020	8,301,388	2,205,997	(12,069,017)	12,809,126	4,489,890
2019	8,280,751	2,136,464	(11,528,429)	13,077,946	638,952
2018	8,280,751	1,872,508	(10,984,263)	13,290,105	466,672
2017	8,021,053	1,837,999	(10,447,831)	13,472,683	267,833
2016	8,021,053	1,709,626	(9,925,642)	13,889,032	-
2015	8,068,929	1,735,080	(9,561,627)	14,218,030	-
2014	8,070,469	1,628,177	(9,119,567)	14,190,721	89,117

**Yuima Municipal Water District
Operating & Capital Indicators
Last Ten Fiscal Years**

Page 1 of 2

	Fiscal Year				
	2023	2022	2021	2020	2019
Service Area	13,491	13,460	13,460	13,460	13,460
Total Rainfall (inches)	21.24	10.38	5.71	19.32	19.76
Miles of Water Main (6"+)	44.12	44.12	44.12	44.12	44.12
Number of Treated Water Tanks	10	10	10	10	10
Capacity of Water Tanks (acre feet)	58.0	58.0	58.0	58.0	58.0
Number of Open Reservoirs	-	-	-	-	-
Capacity of Open Reservoirs (acre feet)	-	-	-	-	-
Number of Ag Only Open Reservoirs	2	2	2	2	2
Capacity of Ag Only Open Reservoirs (acre feet)	11.7	11.7	11.7	11.7	11.7
Number of Producing Wells	23	23	23	23	23
Maximum gallons per minute Flows (1)	2,901	2,901	2,901	2,901	2,901
Number of Pump Stations	9	9	9	9	9
Pump Capacity (horsepower)	5,500	5,500	5,500	4,850	4,850
Number of Service Connections (2)	347	346	346	346	341
Production Peak (mgd) (3)(4)	8.87	8.58	11.87	11.87	13.36
Average Annual Production (mgd)	4.20	5.87	2.60	6.34	5.88
Number of Mainline Repairs	4	3	1	1	1

Source: Yuima Municipal Water District

Notes: (1) Yuima and IDA local wells production including leased wells.

(2) Yuima connections = 114; IDA connections = 233

(3) Peak production month -August 2020.

(4) Local and imported water supplies.

**Yuima Municipal Water District
Operating & Capital Indicators
Last Ten Fiscal Years**

Page 2 of 2

	Fiscal Year				
	2018	2017	2016	2015	2014
Service Area	13,460	13,460	13,460	13,460	13,460
Total Rainfall (inches)	7.06	22.04	15.00	12.75	7.26
Miles of Water Main (8"+)	44.12	44.12	44.12	42.18	42.18
Number of Treated Water Tanks	10	10	10	10	10
Capacity of Water Tanks (acre feet)	58.0	58.0	58.0	58.0	58.0
Number of Open Reservoirs	-	-	-	-	-
Capacity of Open Reservoirs (acre feet)	-	-	-	-	-
Number of Ag Only Open Reservoirs	2	2	2	2	2
Capacity of Ag Only Open Reservoirs (acre feet)	11.7	11.7	11.7	11.7	11.7
Number of Producing Wells	24	25	23	27	27
Maximum gallons per minute Flows	2,901	2,901	2,901	2,901	2,901
Number of Pump Stations	9	9	9	9	9
Pump Capacity (horsepower)	4,850	4,850	4,850	4,850	4,800
Number of Service Connections	338	334	330	330	334
Production Peak (mgd)	10.80	11.80	8.40	10.20	10.20
Average Production (mgd)	7.83	5.90	6.91	6.91	6.91
Number of Mainline Repairs	-	1	-	-	-

Source: Yuima Municipal Water District



Yuima Municipal Water District

34928 Valley Center Road
Post Office Box 177
Pauma Valley, California 92061
(760) 742-3704
www.yuimamwd.com